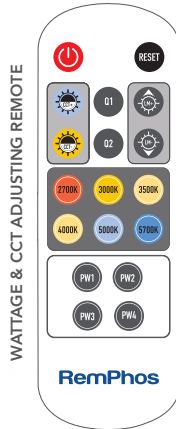
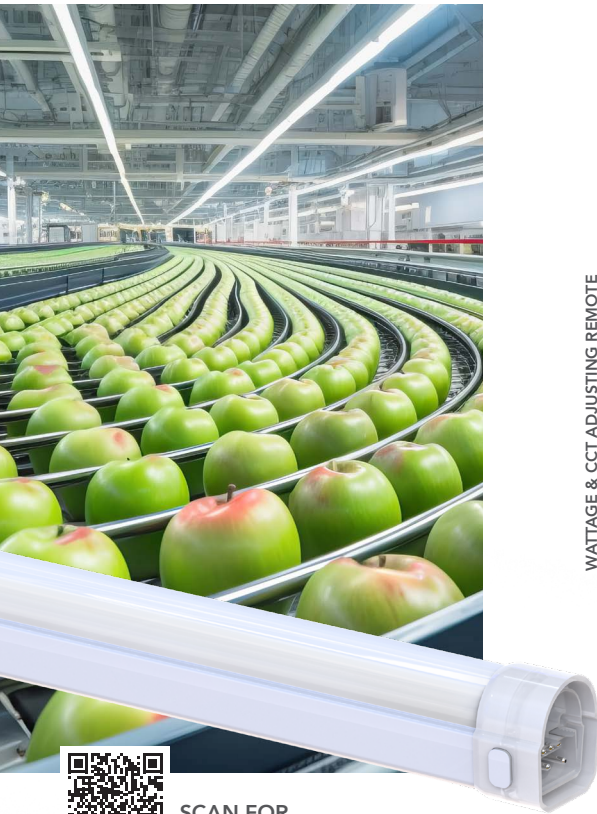




PART # \_\_\_\_\_

JOB NAME \_\_\_\_\_

TYPE \_\_\_\_\_



The LBI 65 is an IP65-rated linkable fixture or retrofit kit. Great for parking garages, coolers, outdoor canopies, tunnels, walkways, and more. Liquid-tight end caps allow for accessories to be used while still maintaining the IP65 rating.

- Suitable for wet locations
- 24 skus in 1 w/ SuperFlex technology
- Link multiple fixtures together w/ seamless connectors, or linking cables, to allow for multiple units to run on a single power source
- Polycarbonate housing w/ inner metal structure and heat sink
- Liquid-tight fitting conduit adapter available
- In-line mounting
- Quick connection in-line occupancy sensor option available
- Built-in white-tuning control channel
- **SIMPLE & NETWORK LIGHTING CONTROL** options available (see pg. 2 & 10-13)



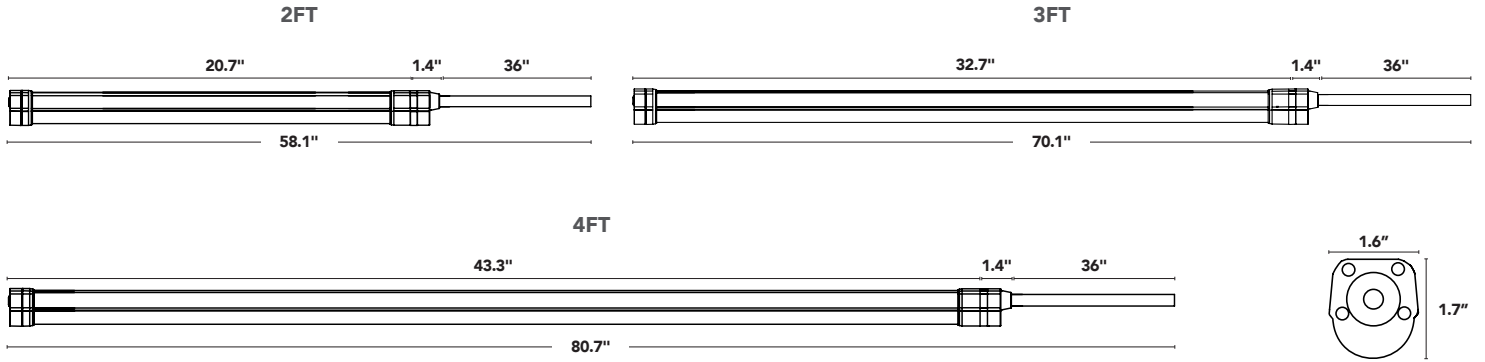
SCAN FOR UP-TO-DATE INFO

### SUPERFLEX SWITCH BETWEEN 4 WATTAGES & 6 CCTS

PART #	UPC	DESCRIPTION	LUMENS	WATTAGE	CCT
RP-LBI65-2F-6W-40K-WC	197810004509	2 FT IP65 RATED LIGHT BAR	640-1920	<b>FLEXWATT</b> 4W/ <b>6W</b> /9W/12W	<b>FLEXCOLOR</b> 2700K/3000K/3500K <b>4000K</b> /5000K/5700K
RP-LBI65-3F-10W-40K-WC	197810004516	3 FT IP65 RATED LIGHT BAR	960-2400	<b>FLEXWATT</b> 6W/ <b>10W</b> /15W/20W	
RP-LBI65-4F-25W-40K-WC	197810004523	4 FT IP65 RATED LIGHT BAR	1920-4000	<b>FLEXWATT</b> 10W/15W/20W/ <b>25W</b>	

DEFAULT WATTAGE AND CCT ARE SHOWN IN BOLD.





### CONTROL OPTIONS

#### SIMPLE LIGHTING CONTROL



**RP-LBI65-PIR-A**  
 IP65 IN-LINE PASSIVE  
 INFRARED OCCUPANCY SENSOR



#### NETWORK LIGHTING CONTROLS



**RP-LBI65-BLE-PIR-A**  
 IP65 IN-LINE SILVAIR-READY BLUETOOTH CONTROL  
 NODE W/ PASSIVE INFRARED OCCUPANCY SENSOR



**RP-LBI65-BLE-A**  
 IP65 IN-LINE SILVAIR-READY  
 BLUETOOTH CONTROL NODE



### INCLUDED HARDWARE

#### REMOTE CONTROLLER



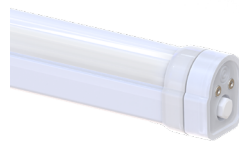
2 STAINLESS STEEL,  
 SELF-TAPPING SCREWS



#### 2 MOUNTING BRACKETS



SHIPS W/ A WATERPROOF END CAP INSTALLED 1-WAY MOISTURE VALVE





## LINEAR AMBIENT (DIRECT LINEAR AMBIENT LUMINAIRES)

PART #	DLC CODE	DLC	# OF BARS	WATTAGE / BAR	MOUNTING CONFIGURATION	TOTAL WATTAGE	TOTAL LUMENS
RP-LBI65-2F-4W-YYK-[WC;C]-[TAA;blank]-[OCC;OCBT;OCBCT;BT;BTX;blank]-[HV;blank]-[EMX;blank]-[A;blank]	S-GPV6WB	●	1	4	SINGLE	4	1872
RP-LBI65-2F-4W-YYK-[WC;C]-[TAA;blank]-[OCC;OCBT;OCBCT;BT;BTX;blank]-[HV;blank]-[EMX;blank]-2L-[A;blank]	S-SH3Z04	●	2	4	LINEAR	8	3743
RP-LBI65-2F-4W-YYK-[WC;C]-[TAA;blank]-[OCC;OCBT;OCBCT;BT;BTX;blank]-[HV;blank]-[EMX;blank]-2X-[A;blank]	S-744RW1	●	2	4	PARALLEL	8	3721
RP-LBI65-2F-4W-YYK-[WC;C]-[TAA;blank]-[OCC;OCBT;OCBCT;BT;BTX;blank]-[HV;blank]-[EMX;blank]-3L-[A;blank]	S-JWV8DB	●	3	4	LINEAR	12	5615
RP-LBI65-2F-4W-YYK-[WC;C]-[TAA;blank]-[OCC;OCBT;OCBCT;BT;BTX;blank]-[HV;blank]-[EMX;blank]-3X-[A;blank]	S-HMX309	●	3	4	PARALLEL	12	5531
RP-LBI65-2F-6W-YYK-[WC;C]-[TAA;blank]-[OCC;OCBT;OCBCT;BT;BTX;blank]-[HV;blank]-[EMX;blank]-[A;blank]	S-VDPTQY	●	1	6	SINGLE	6	1872
RP-LBI65-2F-6W-YYK-[WC;C]-[TAA;blank]-[OCC;OCBT;OCBCT;BT;BTX;blank]-[HV;blank]-[EMX;blank]-2L-[A;blank]	S-LGMSQ	●	2	6	LINEAR	12	3743
RP-LBI65-2F-6W-YYK-[WC;C]-[TAA;blank]-[OCC;OCBT;OCBCT;BT;BTX;blank]-[HV;blank]-[EMX;blank]-2X-[A;blank]	S-0X20Q5	●	2	6	PARALLEL	12	3721
RP-LBI65-2F-6W-YYK-[WC;C]-[TAA;blank]-[OCC;OCBT;OCBCT;BT;BTX;blank]-[HV;blank]-[EMX;blank]-3L-[A;blank]	S-NG8267	●	3	6	LINEAR	18	5615
RP-LBI65-2F-6W-YYK-[WC;C]-[TAA;blank]-[OCC;OCBT;OCBCT;BT;BTX;blank]-[HV;blank]-[EMX;blank]-3X-[A;blank]	S-YDS9BC	●	3	6	PARALLEL	18	5531
RP-LBI65-2F-9W-YYK-[WC;C]-[TAA;blank]-[OCC;OCBT;OCBCT;BT;BTX;blank]-[HV;blank]-[EMX;blank]-[A;blank]	S-WT9XKW	●	1	9	SINGLE	9	1872
RP-LBI65-2F-9W-YYK-[WC;C]-[TAA;blank]-[OCC;OCBT;OCBCT;BT;BTX;blank]-[HV;blank]-[EMX;blank]-2L-[A;blank]	S-S8643F	●	2	9	LINEAR	18	3743
RP-LBI65-2F-9W-YYK-[WC;C]-[TAA;blank]-[OCC;OCBT;OCBCT;BT;BTX;blank]-[HV;blank]-[EMX;blank]-2X-[A;blank]	S-2F4Q83	●	2	9	PARALLEL	18	3721
RP-LBI65-2F-9W-YYK-[WC;C]-[TAA;blank]-[OCC;OCBT;OCBCT;BT;BTX;blank]-[HV;blank]-[EMX;blank]-3L-[A;blank]	S-V782T7	●	3	9	LINEAR	27	5615
RP-LBI65-2F-9W-YYK-[WC;C]-[TAA;blank]-[OCC;OCBT;OCBCT;BT;BTX;blank]-[HV;blank]-[EMX;blank]-3X-[A;blank]	S-3QS044	●	3	9	PARALLEL	27	5531
RP-LBI65-2F-12W-YYK-[WC;C]-[TAA;blank]-[OCC;OCBT;OCBCT;BT;BTX;blank]-[HV;blank]-[EMX;blank]-[A;blank]	S-155JSB	●	1	12	SINGLE	12	1872
RP-LBI65-2F-12W-YYK-[WC;C]-[TAA;blank]-[OCC;OCBT;OCBCT;BT;BTX;blank]-[HV;blank]-[EMX;blank]-2L-[A;blank]	S-GZR72D	●	2	12	LINEAR	24	3743
RP-LBI65-2F-12W-YYK-[WC;C]-[TAA;blank]-[OCC;OCBT;OCBCT;BT;BTX;blank]-[HV;blank]-[EMX;blank]-2X-[A;blank]	S-KHWK85	●	2	12	PARALLEL	24	3721
RP-LBI65-2F-12W-YYK-[WC;C]-[TAA;blank]-[OCC;OCBT;OCBCT;BT;BTX;blank]-[HV;blank]-[EMX;blank]-3L-[A;blank]	S-QN3151	●	3	12	LINEAR	36	5616
RP-LBI65-2F-12W-YYK-[WC;C]-[TAA;blank]-[OCC;OCBT;OCBCT;BT;BTX;blank]-[HV;blank]-[EMX;blank]-3X-[A;blank]	S-T5PDLL	●	3	12	PARALLEL	36	5531
RP-LBI65-3F-6W-YYK-[WC;C]-[TAA;blank]-[OCC;OCBT;OCBCT;BT;BTX;blank]-[HV;blank]-[EMX;blank]-[A;blank]	S-WB99XV	●	1	6	SINGLE	6	2874
RP-LBI65-3F-6W-YYK-[WC;C]-[TAA;blank]-[OCC;OCBT;OCBCT;BT;BTX;blank]-[HV;blank]-[EMX;blank]-2L-[A;blank]	S-MXNTRL	●	2	6	LINEAR	12	5749
RP-LBI65-3F-6W-YYK-[WC;C]-[TAA;blank]-[OCC;OCBT;OCBCT;BT;BTX;blank]-[HV;blank]-[EMX;blank]-2X-[A;blank]	S-VD1KYC	●	2	6	PARALLEL	12	5716
RP-LBI65-3F-6W-YYK-[WC;C]-[TAA;blank]-[OCC;OCBT;OCBCT;BT;BTX;blank]-[HV;blank]-[EMX;blank]-3L-[A;blank]	S-WSDXGY	●	3	6	LINEAR	18	8623
RP-LBI65-3F-6W-YYK-[WC;C]-[TAA;blank]-[OCC;OCBT;OCBCT;BT;BTX;blank]-[HV;blank]-[EMX;blank]-3X-[A;blank]	S-3VCXD3	●	3	6	PARALLEL	18	8536
RP-LBI65-3F-10W-YYK-[WC;C]-[TAA;blank]-[OCC;OCBT;OCBCT;BT;BTX;blank]-[HV;blank]-[EMX;blank]-[A;blank]	S-8487YN	●	1	10	SINGLE	10	2874
RP-LBI65-3F-10W-YYK-[WC;C]-[TAA;blank]-[OCC;OCBT;OCBCT;BT;BTX;blank]-[HV;blank]-[EMX;blank]-2L-[A;blank]	S-3MWP1B	●	2	10	LINEAR	20	5749
RP-LBI65-3F-10W-YYK-[WC;C]-[TAA;blank]-[OCC;OCBT;OCBCT;BT;BTX;blank]-[HV;blank]-[EMX;blank]-2X-[A;blank]	S-B0MQCD	●	2	10	PARALLEL	20	5716
RP-LBI65-3F-10W-YYK-[WC;C]-[TAA;blank]-[OCC;OCBT;OCBCT;BT;BTX;blank]-[HV;blank]-[EMX;blank]-3L-[A;blank]	S-26GBD8	●	3	10	LINEAR	30	8623
RP-LBI65-3F-10W-YYK-[WC;C]-[TAA;blank]-[OCC;OCBT;OCBCT;BT;BTX;blank]-[HV;blank]-[EMX;blank]-3X-[A;blank]	S-V0W3RN	●	3	10	PARALLEL	30	8536
RP-LBI65-3F-15W-YYK-[WC;C]-[TAA;blank]-[OCC;OCBT;OCBCT;BT;BTX;blank]-[HV;blank]-[EMX;blank]-[A;blank]	S-RKXJDW	●	1	15	SINGLE	15	2874
RP-LBI65-3F-15W-YYK-[WC;C]-[TAA;blank]-[OCC;OCBT;OCBCT;BT;BTX;blank]-[HV;blank]-[EMX;blank]-2L-[A;blank]	S-03DJ9T	●	2	15	LINEAR	30	5749
RP-LBI65-3F-15W-YYK-[WC;C]-[TAA;blank]-[OCC;OCBT;OCBCT;BT;BTX;blank]-[HV;blank]-[EMX;blank]-2X-[A;blank]	S-1C28XF	●	2	15	PARALLEL	30	5716
RP-LBI65-3F-15W-YYK-[WC;C]-[TAA;blank]-[OCC;OCBT;OCBCT;BT;BTX;blank]-[HV;blank]-[EMX;blank]-3L-[A;blank]	S-D66JF6	●	3	15	LINEAR	45	8623
RP-LBI65-3F-15W-YYK-[WC;C]-[TAA;blank]-[OCC;OCBT;OCBCT;BT;BTX;blank]-[HV;blank]-[EMX;blank]-3X-[A;blank]	S-JVYYJP	●	3	15	PARALLEL	45	8536
RP-LBI65-3F-20W-YYK-[WC;C]-[TAA;blank]-[OCC;OCBT;OCBCT;BT;BTX;blank]-[HV;blank]-[EMX;blank]-[A;blank]	S-WVWH6V	●	1	20	SINGLE	20	2874
RP-LBI65-3F-20W-YYK-[WC;C]-[TAA;blank]-[OCC;OCBT;OCBCT;BT;BTX;blank]-[HV;blank]-[EMX;blank]-2L-[A;blank]	S-5154RY	●	2	20	LINEAR	40	5749
RP-LBI65-3F-20W-YYK-[WC;C]-[TAA;blank]-[OCC;OCBT;OCBCT;BT;BTX;blank]-[HV;blank]-[EMX;blank]-2X-[A;blank]	S-5715RQ	●	2	20	PARALLEL	40	5716
RP-LBI65-3F-20W-YYK-[WC;C]-[TAA;blank]-[OCC;OCBT;OCBCT;BT;BTX;blank]-[HV;blank]-[EMX;blank]-3L-[A;blank]	S-65DY7X	●	3	20	LINEAR	60	8623
RP-LBI65-3F-20W-YYK-[WC;C]-[TAA;blank]-[OCC;OCBT;OCBCT;BT;BTX;blank]-[HV;blank]-[EMX;blank]-3X-[A;blank]	S-WXZHQL	●	3	20	PARALLEL	60	8536

2FT

3FT

● STANDARD ● PREMIUM FAMILY CODE: MMMTNV

TESTED AT 2700K



## LINEAR AMBIENT (DIRECT LINEAR AMBIENT LUMINAIRES)

PART #	DLC CODE	DLC	# OF BARS	WATTAGE / BAR	MOUNTING CONFIGURATION	TOTAL WATTAGE	TOTAL LUMENS
RP-LBI65-4F-10W-YYK-[WC,C]-[TAA;blank]-[OCC;OCBT;OCBCT;BT;BTX;blank]-[HV;blank]-[EMX;blank]-[A;blank]	S-RXTRCH	●	1	10	SINGLE	10	3824
RP-LBI65-4F-10W-YYK-[WC,C]-[TAA;blank]-[OCC;OCBT;OCBCT;BT;BTX;blank]-[HV;blank]-[EMX;blank]-2L-[A;blank]	S-0ZLS7Z	●	2	10	LINEAR	20	7649
RP-LBI65-4F-10W-YYK-[WC,C]-[TAA;blank]-[OCC;OCBT;OCBCT;BT;BTX;blank]-[HV;blank]-[EMX;blank]-2X-[A;blank]	S-ZPP4K8	●	2	10	PARALLEL	20	7606
RP-LBI65-4F-10W-YYK-[WC,C]-[TAA;blank]-[OCC;OCBT;OCBCT;BT;BTX;blank]-[HV;blank]-[EMX;blank]-3X-[A;blank]	S-QXLY7T	●	3	10	PARALLEL	30	11324
RP-LBI65-4F-15W-YYK-[WC,C]-[TAA;blank]-[OCC;OCBT;OCBCT;BT;BTX;blank]-[HV;blank]-[EMX;blank]-[A;blank]	S-N32WYB	●	1	15	SINGLE	15	3824
RP-LBI65-4F-15W-YYK-[WC,C]-[TAA;blank]-[OCC;OCBT;OCBCT;BT;BTX;blank]-[HV;blank]-[EMX;blank]-2L-[A;blank]	S-GSNMFH	●	2	15	LINEAR	30	7649
RP-LBI65-4F-15W-YYK-[WC,C]-[TAA;blank]-[OCC;OCBT;OCBCT;BT;BTX;blank]-[HV;blank]-[EMX;blank]-2X-[A;blank]	S-SH2TVJ	●	2	15	PARALLEL	30	7606
RP-LBI65-4F-15W-YYK-[WC,C]-[TAA;blank]-[OCC;OCBT;OCBCT;BT;BTX;blank]-[HV;blank]-[EMX;blank]-3X-[A;blank]	S-SMFZB6	●	3	15	PARALLEL	45	11324
RP-LBI65-4F-20W-YYK-[WC,C]-[TAA;blank]-[OCC;OCBT;OCBCT;BT;BTX;blank]-[HV;blank]-[EMX;blank]-[A;blank]	S-ZC55PZ	●	1	20	SINGLE	20	3824
RP-LBI65-4F-20W-YYK-[WC,C]-[TAA;blank]-[OCC;OCBT;OCBCT;BT;BTX;blank]-[HV;blank]-[EMX;blank]-2L-[A;blank]	S-7192HT	●	2	20	LINEAR	4	7649
RP-LBI65-4F-20W-YYK-[WC,C]-[TAA;blank]-[OCC;OCBT;OCBCT;BT;BTX;blank]-[HV;blank]-[EMX;blank]-2X-[A;blank]	S-5RY6B2	●	2	20	PARALLEL	40	7606
RP-LBI65-4F-20W-YYK-[WC,C]-[TAA;blank]-[OCC;OCBT;OCBCT;BT;BTX;blank]-[HV;blank]-[EMX;blank]-3X-[A;blank]	S-9Y0WS3	●	3	20	PARALLEL	60	11324
RP-LBI65-4F-25W-YYK-[WC,C]-[TAA;blank]-[OCC;OCBT;OCBCT;BT;BTX;blank]-[HV;blank]-[EMX;blank]-[A;blank]	S-H3PQMB	●	1	25	SINGLE	25	3824
RP-LBI65-4F-25W-YYK-[WC,C]-[TAA;blank]-[OCC;OCBT;OCBCT;BT;BTX;blank]-[HV;blank]-[EMX;blank]-2L-[A;blank]	S-8ZM6JW	●	2	25	LINEAR	50	7649
RP-LBI65-4F-25W-YYK-[WC,C]-[TAA;blank]-[OCC;OCBT;OCBCT;BT;BTX;blank]-[HV;blank]-[EMX;blank]-2X-[A;blank]	S-82XD8K	●	2	25	PARALLEL	50	7606
RP-LBI65-4F-25W-YYK-[WC,C]-[TAA;blank]-[OCC;OCBT;OCBCT;BT;BTX;blank]-[HV;blank]-[EMX;blank]-3X-[A;blank]	S-9TDQW2	●	3	25	PARALLEL	75	11324

## LOW OUPUT (STAIRWELL AND PASSAGEWAY LUMINAIRES)

PART #	DLC CODE	DLC	# OF BARS	WATTAGE / BAR	MOUNTING CONFIGURATION	TOTAL WATTAGE	TOTAL LUMENS
RP-LBI65-2F-12W-YYK-[WC,C]-[TAA;blank]-[OCC;OCBT;OCBCT;BT;BTX;blank]-[HV;blank]-[EMX;blank]-[A;blank]	S-11CH62	●	1	4	SINGLE	4	1872
RP-LBI65-2F-4W-YYK-[WC,C]-[TAA;blank]-[OCC;OCBT;OCBCT;BT;BTX;blank]-[HV;blank]-[EMX;blank]-2L-[A;blank]	S-6WTMX4	●	2	4	LINEAR	8	3743
RP-LBI65-2F-4W-YYK-[WC,C]-[TAA;blank]-[OCC;OCBT;OCBCT;BT;BTX;blank]-[HV;blank]-[EMX;blank]-2X-[A;blank]	S-VM57VY	●	2	4	PARALLEL	8	3721
RP-LBI65-2F-6W-YYK-[WC,C]-[TAA;blank]-[OCC;OCBT;OCBCT;BT;BTX;blank]-[HV;blank]-[EMX;blank]-[A;blank]	S-3WKGKJ	●	1	6	SINGLE	6	1872
RP-LBI65-2F-6W-YYK-[WC,C]-[TAA;blank]-[OCC;OCBT;OCBCT;BT;BTX;blank]-[HV;blank]-[EMX;blank]-2L-[A;blank]	S-WDP580	●	2	6	LINEAR	12	3743
RP-LBI65-2F-6W-YYK-[WC,C]-[TAA;blank]-[OCC;OCBT;OCBCT;BT;BTX;blank]-[HV;blank]-[EMX;blank]-2X-[A;blank]	S-XFTP9Q	●	2	6	PARALLEL	12	3721
RP-LBI65-2F-9W-YYK-[WC,C]-[TAA;blank]-[OCC;OCBT;OCBCT;BT;BTX;blank]-[HV;blank]-[EMX;blank]-[A;blank]	S-2GGSBG	●	1	9	SINGLE	9	1872
RP-LBI65-2F-9W-YYK-[WC,C]-[TAA;blank]-[OCC;OCBT;OCBCT;BT;BTX;blank]-[HV;blank]-[EMX;blank]-2L-[A;blank]	S-THGFB8	●	2	9	LINEAR	18	3743
RP-LBI65-2F-9W-YYK-[WC,C]-[TAA;blank]-[OCC;OCBT;OCBCT;BT;BTX;blank]-[HV;blank]-[EMX;blank]-2X-[A;blank]	S-FKBMZ4	●	2	9	PARALLEL	18	3721
RP-LBI65-2F-12W-YYK-[WC,C]-[TAA;blank]-[OCC;OCBT;OCBCT;BT;BTX;blank]-[HV;blank]-[EMX;blank]-[A;blank]	S-HCYTMW	●	1	12	SINGLE	12	1872
RP-LBI65-2F-12W-YYK-[WC,C]-[TAA;blank]-[OCC;OCBT;OCBCT;BT;BTX;blank]-[HV;blank]-[EMX;blank]-2L-[A;blank]	S-59WXD1	●	2	12	LINEAR	24	3743
RP-LBI65-2F-12W-YYK-[WC,C]-[TAA;blank]-[OCC;OCBT;OCBCT;BT;BTX;blank]-[HV;blank]-[EMX;blank]-2X-[A;blank]	S-RL5N1R	●	2	12	PARALLEL	24	3721
RP-LBI65-3F-6W-YYK-[WC,C]-[TAA;blank]-[OCC;OCBT;OCBCT;BT;BTX;blank]-[HV;blank]-[EMX;blank]-[A;blank]	S-8J5M0Q	●	1	6	SINGLE	6	2874
RP-LBI65-3F-10W-YYK-[WC,C]-[TAA;blank]-[OCC;OCBT;OCBCT;BT;BTX;blank]-[HV;blank]-[EMX;blank]-[A;blank]	S-LFWK48	●	1	10	SINGLE	10	2874
RP-LBI65-3F-15W-YYK-[WC,C]-[TAA;blank]-[OCC;OCBT;OCBCT;BT;BTX;blank]-[HV;blank]-[EMX;blank]-[A;blank]	S-XH5Y2R	●	1	15	SINGLE	15	2874
RP-LBI65-3F-20W-YYK-[WC,C]-[TAA;blank]-[OCC;OCBT;OCBCT;BT;BTX;blank]-[HV;blank]-[EMX;blank]-[A;blank]	S-RKBK37	●	1	20	SINGLE	20	2874
RP-LBI65-4F-10W-YYK-[WC,C]-[TAA;blank]-[OCC;OCBT;OCBCT;BT;BTX;blank]-[HV;blank]-[EMX;blank]-[A;blank]	S-61RZ44	●	1	10	SINGLE	10	3824
RP-LBI65-4F-15W-YYK-[WC,C]-[TAA;blank]-[OCC;OCBT;OCBCT;BT;BTX;blank]-[HV;blank]-[EMX;blank]-[A;blank]	S-ZT7M4L	●	1	15	SINGLE	15	3824
RP-LBI65-4F-20W-YYK-[WC,C]-[TAA;blank]-[OCC;OCBT;OCBCT;BT;BTX;blank]-[HV;blank]-[EMX;blank]-[A;blank]	S-YZ5CX4	●	1	20	SINGLE	20	3824
RP-LBI65-4F-25W-YYK-[WC,C]-[TAA;blank]-[OCC;OCBT;OCBCT;BT;BTX;blank]-[HV;blank]-[EMX;blank]-[A;blank]	S-V49614	●	1	25	SINGLE	25	3824

● STANDARD ● PREMIUM FAMILY CODE: MMMTNV

TESTED AT 2700K



### MID OUPUT (STAIRWELL AND PASSAGEWAY LUMINAIRES)

	PART #	DLC CODE	DLC	# OF BARS	WATTAGE / BAR	MOUNTING CONFIGURATION	TOTAL WATTAGE	TOTAL LUMENS	
2FT	RP-LBI65-2F-4W-YYK-[WC;C]-[TAA;blank]-[OCC;OCBT;OCBCT;BT;BTX;blank]-[HV;blank]-[EMX;blank]-3L-[A;blank]	S-9LPWT9	●	3	4	LINEAR	12	5615	
	RP-LBI65-2F-4W-YYK-[WC;C]-[TAA;blank]-[OCC;OCBT;OCBCT;BT;BTX;blank]-[HV;blank]-[EMX;blank]-3X-[A;blank]	S-FTCJZZ	●	3	4	PARALLEL	12	5531	
	RP-LBI65-2F-6W-YYK-[WC;C]-[TAA;blank]-[OCC;OCBT;OCBCT;BT;BTX;blank]-[HV;blank]-[EMX;blank]-3L-[A;blank]	S-8F9XX9	●	3	6	LINEAR	18	5615	
	RP-LBI65-2F-6W-YYK-[WC;C]-[TAA;blank]-[OCC;OCBT;OCBCT;BT;BTX;blank]-[HV;blank]-[EMX;blank]-3X-[A;blank]	S-H2JPW7	●	3	6	PARALLEL	18	5531	
	RP-LBI65-2F-9W-YYK-[WC;C]-[TAA;blank]-[OCC;OCBT;OCBCT;BT;BTX;blank]-[HV;blank]-[EMX;blank]-3L-[A;blank]	S-HXKVDV	●	3	9	LINEAR	27	5615	
	RP-LBI65-2F-9W-YYK-[WC;C]-[TAA;blank]-[OCC;OCBT;OCBCT;BT;BTX;blank]-[HV;blank]-[EMX;blank]-3X-[A;blank]	S-4ZYXZ7	●	3	9	PARALLEL	27	5531	
3FT	RP-LBI65-2F-12W-YYK-[WC;C]-[TAA;blank]-[OCC;OCBT;OCBCT;BT;BTX;blank]-[HV;blank]-[EMX;blank]-3L-[A;blank]	S-5QVBBP	●	3	12	LINEAR	36	5616	
	RP-LBI65-2F-12W-YYK-[WC;C]-[TAA;blank]-[OCC;OCBT;OCBCT;BT;BTX;blank]-[HV;blank]-[EMX;blank]-3X-[A;blank]	S-M9XP4B	●	3	12	PARALLEL	36	5531	
	RP-LBI65-3F-6W-YYK-[WC;C]-[TAA;blank]-[OCC;OCBT;OCBCT;BT;BTX;blank]-[HV;blank]-[EMX;blank]-2L-[A;blank]	S-55Q3S0	●	2	6	LINEAR	12	5749	
	RP-LBI65-3F-6W-YYK-[WC;C]-[TAA;blank]-[OCC;OCBT;OCBCT;BT;BTX;blank]-[HV;blank]-[EMX;blank]-2X-[A;blank]	S-GG8910	●	2	6	PARALLEL	12	5716	
	RP-LBI65-3F-6W-YYK-[WC;C]-[TAA;blank]-[OCC;OCBT;OCBCT;BT;BTX;blank]-[HV;blank]-[EMX;blank]-3L-[A;blank]	S-C4N3WH	●	3	6	LINEAR	18	8623	
	RP-LBI65-3F-6W-YYK-[WC;C]-[TAA;blank]-[OCC;OCBT;OCBCT;BT;BTX;blank]-[HV;blank]-[EMX;blank]-3X-[A;blank]	S-1LCDST	●	3	6	PARALLEL	18	8536	
	RP-LBI65-3F-10W-YYK-[WC;C]-[TAA;blank]-[OCC;OCBT;OCBCT;BT;BTX;blank]-[HV;blank]-[EMX;blank]-2L-[A;blank]	S-RTT28D	●	2	10	LINEAR	20	5749	
	RP-LBI65-3F-10W-YYK-[WC;C]-[TAA;blank]-[OCC;OCBT;OCBCT;BT;BTX;blank]-[HV;blank]-[EMX;blank]-2X-[A;blank]	S-W2Q8ZM	●	2	10	PARALLEL	20	5716	
	RP-LBI65-3F-10W-YYK-[WC;C]-[TAA;blank]-[OCC;OCBT;OCBCT;BT;BTX;blank]-[HV;blank]-[EMX;blank]-3L-[A;blank]	S-KJQFF1	●	3	10	LINEAR	30	8623	
	RP-LBI65-3F-10W-YYK-[WC;C]-[TAA;blank]-[OCC;OCBT;OCBCT;BT;BTX;blank]-[HV;blank]-[EMX;blank]-3X-[A;blank]	S-PYPQQC	●	3	10	PARALLEL	30	8536	
	RP-LBI65-3F-15W-YYK-[WC;C]-[TAA;blank]-[OCC;OCBT;OCBCT;BT;BTX;blank]-[HV;blank]-[EMX;blank]-2L-[A;blank]	S-7CS1WF	●	2	15	LINEAR	30	5749	
	RP-LBI65-3F-15W-YYK-[WC;C]-[TAA;blank]-[OCC;OCBT;OCBCT;BT;BTX;blank]-[HV;blank]-[EMX;blank]-2X-[A;blank]	S-754MFJ	●	2	15	PARALLEL	30	5716	
	RP-LBI65-3F-15W-YYK-[WC;C]-[TAA;blank]-[OCC;OCBT;OCBCT;BT;BTX;blank]-[HV;blank]-[EMX;blank]-3L-[A;blank]	S-GH93VH	●	3	15	LINEAR	45	8623	
	RP-LBI65-3F-15W-YYK-[WC;C]-[TAA;blank]-[OCC;OCBT;OCBCT;BT;BTX;blank]-[HV;blank]-[EMX;blank]-3X-[A;blank]	S-T6X8G3	●	3	15	PARALLEL	45	8536	
	RP-LBI65-3F-20W-YYK-[WC;C]-[TAA;blank]-[OCC;OCBT;OCBCT;BT;BTX;blank]-[HV;blank]-[EMX;blank]-2L-[A;blank]	S-Y8CDQ5	●	2	20	LINEAR	40	5749	
	RP-LBI65-3F-20W-YYK-[WC;C]-[TAA;blank]-[OCC;OCBT;OCBCT;BT;BTX;blank]-[HV;blank]-[EMX;blank]-2X-[A;blank]	S-CBP0X3	●	2	20	PARALLEL	40	5716	
	RP-LBI65-3F-20W-YYK-[WC;C]-[TAA;blank]-[OCC;OCBT;OCBCT;BT;BTX;blank]-[HV;blank]-[EMX;blank]-3L-[A;blank]	S-P0L549	●	3	20	LINEAR	60	8623	
	RP-LBI65-3F-20W-YYK-[WC;C]-[TAA;blank]-[OCC;OCBT;OCBCT;BT;BTX;blank]-[HV;blank]-[EMX;blank]-3X-[A;blank]	S-02BPTT	●	3	20	PARALLEL	60	8536	
	4FT	RP-LBI65-4F-10W-YYK-[WC;C]-[TAA;blank]-[OCC;OCBT;OCBCT;BT;BTX;blank]-[HV;blank]-[EMX;blank]-2L-[A;blank]	S-CTG99H	●	2	10	LINEAR	20	7649
		RP-LBI65-4F-10W-YYK-[WC;C]-[TAA;blank]-[OCC;OCBT;OCBCT;BT;BTX;blank]-[HV;blank]-[EMX;blank]-2X-[A;blank]	S-N0ZMZH	●	2	10	PARALLEL	20	7606
RP-LBI65-4F-15W-YYK-[WC;C]-[TAA;blank]-[OCC;OCBT;OCBCT;BT;BTX;blank]-[HV;blank]-[EMX;blank]-2L-[A;blank]		S-F3NZLM	●	2	15	LINEAR	30	7649	
RP-LBI65-4F-15W-YYK-[WC;C]-[TAA;blank]-[OCC;OCBT;OCBCT;BT;BTX;blank]-[HV;blank]-[EMX;blank]-2X-[A;blank]		S-ZQ0FCF	●	2	15	PARALLEL	30	7606	
RP-LBI65-4F-20W-YYK-[WC;C]-[TAA;blank]-[OCC;OCBT;OCBCT;BT;BTX;blank]-[HV;blank]-[EMX;blank]-2L-[A;blank]		S-Y8LMBP	●	2	20	LINEAR	40	7649	
RP-LBI65-4F-20W-YYK-[WC;C]-[TAA;blank]-[OCC;OCBT;OCBCT;BT;BTX;blank]-[HV;blank]-[EMX;blank]-2X-[A;blank]		S-FXJHP9	●	2	20	PARALLEL	40	7606	
RP-LBI65-4F-25W-YYK-[WC;C]-[TAA;blank]-[OCC;OCBT;OCBCT;BT;BTX;blank]-[HV;blank]-[EMX;blank]-2L-[A;blank]		S-8M07FR	●	2	25	LINEAR	50	7649	
RP-LBI65-4F-25W-YYK-[WC;C]-[TAA;blank]-[OCC;OCBT;OCBCT;BT;BTX;blank]-[HV;blank]-[EMX;blank]-2X-[A;blank]		S-158JD4	●	2	25	PARALLEL	50	7606	

### HIGH OUPUT (STAIRWELL AND PASSAGEWAY LUMINAIRES)


	PART #	DLC CODE	DLC	# OF BARS	WATTAGE / BAR	MOUNTING CONFIGURATION	TOTAL WATTAGE	TOTAL LUMENS
4FT	RP-LBI65-4F-10W-YYK-[WC;C]-[TAA;blank]-[OCC;OCBT;OCBCT;BT;BTX;blank]-[HV;blank]-[EMX;blank]-3X-[A;blank]	S-4HGKGJ	●	3	10	PARALLEL	30	11324
	RP-LBI65-4F-15W-YYK-[WC;C]-[TAA;blank]-[OCC;OCBT;OCBCT;BT;BTX;blank]-[HV;blank]-[EMX;blank]-3X-[A;blank]	S-F9K7VC	●	3	15	PARALLEL	45	11324
	RP-LBI65-4F-20W-YYK-[WC;C]-[TAA;blank]-[OCC;OCBT;OCBCT;BT;BTX;blank]-[HV;blank]-[EMX;blank]-3X-[A;blank]	S-JQ7J8T	●	3	20	PARALLEL	60	11324
	RP-LBI65-4F-25W-YYK-[WC;C]-[TAA;blank]-[OCC;OCBT;OCBCT;BT;BTX;blank]-[HV;blank]-[EMX;blank]-3X-[A;blank]	S-DBY3BF	●	3	25	PARALLEL	75	11324







● STANDARD ● PREMIUM FAMILY CODE: MMMTNV

TESTED AT 2700K



## CABLES + CONNECTORS

PART #				DESCRIPTION
6IN	12IN	24IN	48IN	
RP-LBI65-LC-6IN-DIM	RP-LBI65-LC-12IN-DIM	RP-LBI65-LC-24IN-DIM	RP-LBI65-LC-48IN-DIM	 

PART #	DESCRIPTION	
RP-LBI65-IP-3FT	3 FT INCOMING POWER CABLE WIRE WHIP	
RP-LBI-SSC-CCTDIM-10P	SEAMLESS CONNECTOR W/ CCT CCT IN-LINE SEAMLESS CONNECTOR	 CCT
RP-LBI-SSC-NOCCTDIM-10P	NON-DIMMING SEAMLESS CONNECTOR AVAILABLE FOR NON-DIMMING AND NON-CCT CONTROL APPLICATIONS	 NODIM
RP-LBI65-IPC-12NPT-3FT	INCOMING POWER CONDUIT ADAPTER 3 FT OF WIRE INPUT INCLUDED	
RP-LBI65-SPND-SS-10FT (1 PACK) RP-LBI65-SPND-SS-10FT-2P (2 PACK)	STAINLESS STEEL, WATERPROOF AIRCRAFT SUSPENSION CABLE	
RP-LBI-EMG2-25W RP-LBI-EMG2-8W-DIM RP-LBI-EMG2-25W-DIM	<p>RP-LBI-EMG2-25W (DUAL FLEX)                      RP-LBI-EMG2-8W-DIM (LINKABLE UP TO THREE 4' LBI SET AT MAX WATTAGE)                      RP-LBI-EMG2-25W-DIM (LINKABLE UP TO EIGHT 4' LBI SET AT MAX WATTAGE)</p> <p>THE EMG-H SERIES LED EMERGENCY DRIVERS ARE UL LISTED FOR FACTORY OR FIELD INSTALLATION, UNRIVALED EMERGENCY SOLUTIONS FOR LED PRODUCT WITH INTERNAL DRIVER. IT ALLOWS THE SAME LED LUMINAIRE TO BE USED FOR NORMAL AND EMERGENCY OPERATION, AND WORKS IN CONJUNCTION WITH AN AC LED DRIVER THAT CONVERT NEW OR EXISTING LED FIXTURES INTO EMERGENCY LIGHTING. IT INCLUDES A LONG-LIFE, RECYCLABLE, LITHIUM BATTERY, AND IS BACKED BY A 5-YEAR WARRANTY. EMERGENCY BATTERY BACKUP IS FOR INDOOR USE ONLY.</p>	

### LINKING QUANTITY

	120V	208V	240V	277V
4FT	30 BARS	40 BARS	40 BARS	40 BARS
3FT	40 BARS	40 BARS	40 BARS	40 BARS
2FT	40 BARS	40 BARS	40 BARS	40 BARS

### LINKING POSSIBILITIES

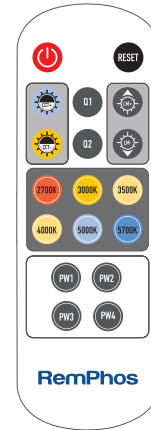
- Linking cables will lower connectable quantities.
- The linking numbers are based on using the LBI 65 conduit adapter and connected end to end.
- If incoming power cables are used when powered on 120VAC, linking number is reduced to 24pcs.
- Linking does not include 0-10V linked control. This will depend on the controlling device.



24 SKUs in 1 WITH FLEXWATT™ & FLEXCOLOR™ TECHNOLOGY (CONTROLLABLE FROM REMOTE)



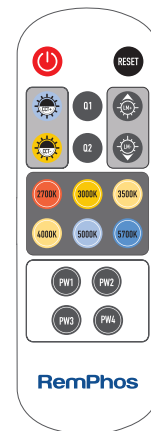
	PW1	PW2	PW3	PW4
2FT	4W	6W	9W	12W
3FT	6W	10W	15W	20W
4FT	10W	15W	20W	25W



- Eliminate ordering and stocking multiple wattages and color temperatures. Product offers 24 SKUs in 1 unit which can easily be configured to 4 different wattage packages and 6 different CCTs.



<b>2700K</b> 2700°K WARM	<b>4000K</b> 4000°K NEUTRAL
<b>3000K</b> 3000°K WARM	<b>5000K</b> 5000°K COOL
<b>3500K</b> 3500°K NEUTRAL	<b>5700K</b> 5700°K COOL



- Product ships at a default color temp (K) and wattage setting (install as is, or tailor the settings to fit your needs).
- Save on labor costs by having us factory pre-set the wattage and color temperature (possible upcharge - contact us for more details).

### FLEXCONTROL™ TECHNOLOGY

- Order control-ready, simple lighting controls (integrated high/low and daylight sensor), or network lighting controls.
- Optional sensors are directly linkable to the light bars.
- Our basic motion/daylight control (RP-LBI65-PIR-A ordering code) is adjustable via remote control for sensitivity duration of time at high light level before dimming to low duration of time at low light level before turning off. Ramping up and down light levels based on daylight and the dimmed light level %.

### SUITABLE FOR WET LOCATIONS

### PASS-THROUGH 0-10V DIMMING, AUXILIARY 12V OUTPUT, & COLOR CONTROL CHANNEL

- Allows all light bars to be dimmed & white tuned together as a group.

### ADAPTABLE MOUNTING

- Included mounting clips (x2) made from stainless steel, painted white to match fixture. Suspension mounting holes in bracket for 3/8" diameter threaded rod. Included stainless steel, self-drilling screws for surface mounting.



## RP-LBI-EMG2-25W (DUAL FLEX)

### PRODUCT DESCRIPTION

The EMG-H Series LED emergency drivers are UL Listed for factory or field installation. Unrivaled emergency solutions for LED product with internal driver. It allows the same LED luminaire to be used for normal and emergency operation, and works in conjunction with an AC LED driver that converts new or existing LED fixtures into emergency lighting. It includes a long-life, recyclable, lithium battery and is backed by a 5 year warranty.

### OPERATION

When AC power fails, the EM-H Series emergency LED driver immediately switches to the emergency mode, operating the LEDs at full lumen output for a minimum of 90 minutes (25W max load). When AC power is restored, the emergency driver automatically returns to the charging mode.

### FEATURES

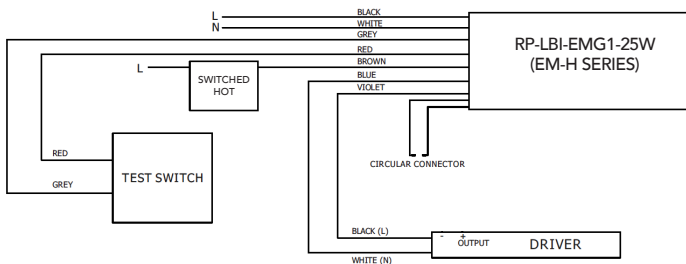
- Life-long, recyclable, Lithium battery
- Integration of test switch and charge indicator
- Used for exterior or interior of luminaire
- The power of LED luminaire < power of EMG driver
- Will power one LBI (1) 4 FT LBI at 25 watts for 90 min

### MOUNTING CONFIGURATION

Provides dual flex for wiring to both fixture or driver compartment and test accessories.



### TYPICAL WIRING DIAGRAM



### EM-H Series

#### UL LISTED LED EMERGENCY DRIVER

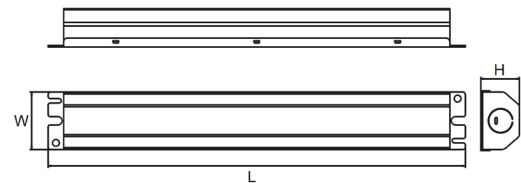
Unrivaled emergency solutions for LED Products with Internal drivers



TEST LIGHT/BUTTON

#### DIMENSIONS

MODEL	L	W	H
EM-H25170-XX	17.14"	2.13"	1.57"



#### OUTPUT POWER

25 Watts (Max Load)

#### OUTPUT VOLTAGE

170V DC

#### INPUT CURRENT

60 mA (Max)

#### INPUT POWER

8 Watts (Max)

#### INPUT VOLTAGE

120-277VAC, 50-60Hz

#### EMERGENCY OPERATION

>90 Minutes

#### OPERATING TEMP

0° to 50°C

#### BATTERY

Lithium

#### RECHARGE

36 HRS

#### DIMENSIONS

L 17.14" X W 2.13" X H 1.57"

### RP-LBI-EMG2-25W (EM-H25170-XX)





**RP-LBI-EMG2-8W-DIM** (LINKABLE UP TO THREE 4' LBI SET AT MAX WATTAGE)

**RP-LBI-EMG2-25W-DIM** (LINKABLE UP TO EIGHT 4' LBI SET AT MAX WATTAGE)

## PRODUCT DESCRIPTION

The EMG-H Series LED emergency drivers are UL Listed for factory or field installation. Unrivaled emergency solutions for LED product with internal driver. It allows the same LED luminaire to be used for normal and emergency operation and works in conjunction with an AC LED driver that converts new or existing LED fixtures into emergency lighting. It includes a long-life, recyclable, lithium battery and is backed by a 5 year warranty.

## INSTALLATION

The emergency back-up will dim the connected fixtures down to a level where they will run without line voltage for 90 minutes. For fixtures that are connected to a wall dimmer the emergency back-up will override the current dim setting and provide the maximum illumination possible at the selected wattage for 90 minutes. The number of LBIs that can be connected is determined by the "maximum luminaire power load" listed for each respective back-up wattage that we offer. The Luminaire power load is referencing the amount of power the fixture(s) consume; This is selected by the FLEXWATT setting of each fixture. When using multiple fixtures, the wattages are added together to get the total power load.

## OPERATION

When AC power fails, the EM-H Series emergency LED driver immediately switches to the emergency mode for a minimum of 90 minutes. When AC power is restored, the emergency driver automatically returns to the charging mode.

## FEATURES

- Life-long, recyclable, Lithium battery
- Integration of test switch and charge indicator
- Used for exterior or interior of luminaire
- 8W version, load up to 100W or (3) 4 FT LBI w/dim control
- 25W version, load up to 300W or (8) 4 FT LBI w/ dim control

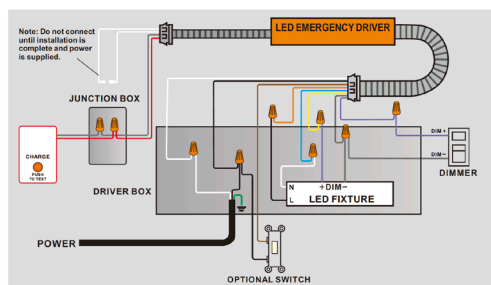
## MOUNTING CONFIGURATION

Provides dual flex for wiring to both fixture or driver compartment and test accessories.



## TYPICAL WIRING DIAGRAM

Must connect DIM circuit from EM unit to LBI



## EM-H Series UL LISTED LED EMERGENCY DRIVER

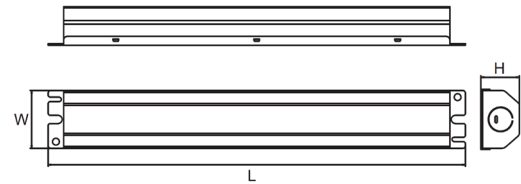
Unrivaled emergency solutions for LED Products with Internal drivers



TEST LIGHT/BUTTON

### DIMENSIONS

MODEL	L	W	H
RP-LBI-EMG2-8W-DIM	12.76"	2.13"	1.57"
RP-LBI-EMG2-25W-DIM	15.40"	2.13"	1.57"



### RP-LBI-EMG2-8W-DIM (EM-H08170-LBF)

#### OUTPUT POWER

8 Watts

#### OUTPUT VOLTAGE

170V DC

#### INPUT CURRENT

70 mA (Max)

#### INPUT POWER

3.2 Watts (Max)

#### INPUT VOLATAGE

100-277VAC, 50-60Hz

#### EMERGENCY OPERATION

>90 Minutes

#### OPERATING TEMP

0° to 50°C

#### BATTERY

Lithium

#### RECHARGE

24 Hrs

#### LUMINAIRE LOAD POWER

100W (Max) or three LBI 4'

#### CERTIFICATES

UL, CEC

### RP-LBI-EMG2-25W-DIM (EM-H25170-LBF)

#### OUTPUT POWER

25 Watts

#### OUTPUT VOLTAGE

170V DC

#### INPUT CURRENT

110 mA (Max)

#### INPUT POWER

6 Watts (Max)

#### INPUT VOLATAGE

120-277VAC, 50-60Hz

#### EMERGENCY OPERATION

>90 Minutes

#### OPERATING TEMP

0° to 50°C

#### BATTERY

Lithium

#### RECHARGE

36 Hrs

#### LUMINAIRE LOAD POWER

300W (Max) or eight LBI 4'

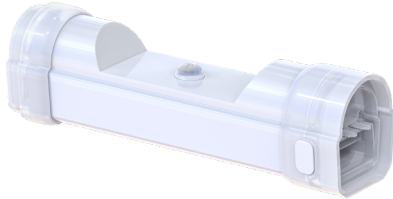
#### CERTIFICATES

UL, CEC



## IP65 IN-LINE PASSIVE INFRARED OCCUPANCY SENSOR

ORDERING **RP-LBI65-PIR-A**, IN ADDITION TO THE LBI 65 PART NUMBER, UPGRADES THE FIXTURE W/ A **SIMPLE CONTROL** IN-LINE PASSIVE INFRARED OCCUPANCY SENSOR.



### ATTRIBUTES

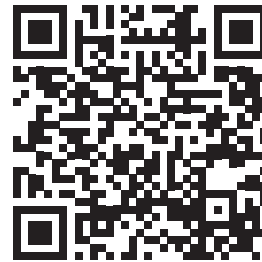
<b>DETECTION TECHNOLOGY</b>	PASSIVE INFRARED (PIR)
<b>DETECTION TYPE</b>	OCCUPANCY
<b>SENSOR POWER</b>	12VDC
<b>GROUPABLE</b>	NO
<b>NETWORK LIGHTING CONTROL</b>	NO
<b>COMMISSIONING METHOD</b>	IR REMOTE
<b>REMOTE</b>	IR11
<b>DAYLIGHT HARVESTING</b>	YES
<b>HI OR LOW TRIM</b>	NO
<b>BI-LEVEL DIMMING</b>	YES
<b>NETWORK TECHNOLOGY</b>	NONE
<b>INSTALLATION TYPE</b>	INTERNAL
<b>DLC LISTED</b>	YES
<b>CONTROL CAPACITY</b>	15 BARS

### IR11 REMOTE



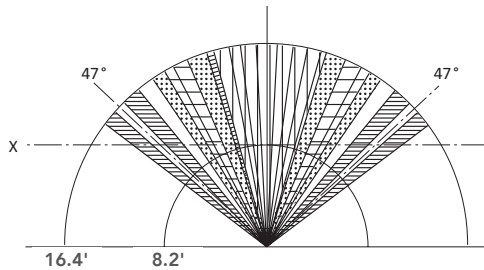
- Permanent ON/OFF Function
- Permanent OFF
- Sensor Mode
- Reset Function
- Disable Daylight Sensor
- Test Mode

FOR MORE INFORMATION ON THE IR11 REMOTE SCAN BELOW

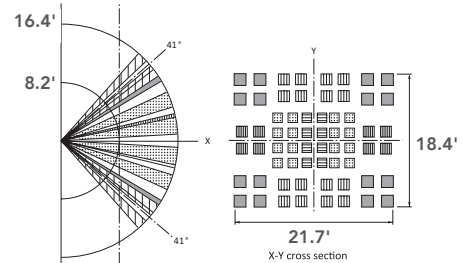


### DETECTION PATTERN / RP-LBI65-PIR-A

TOP VIEW



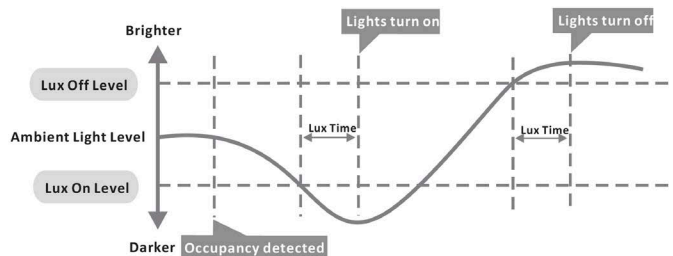
SIDE



### DAYLIGHT HARVESTING / RP-LBI65-PIR-A

Sensor detects the difference between natural light and artificial light (lamp) from behind the diffuser, switch on automatically (even w/o movements) when the ambient light is below the target value, and switch off automatically whenever the artificial light is not required (ambient light is bright enough).

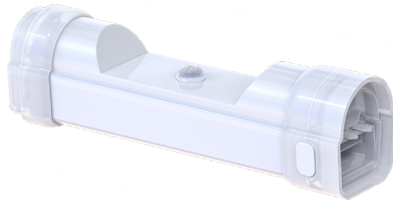
**NOTE** LUX-OFF SAMPLING TIME - 30S. LUX-ON SAMPLING TIME - 10S. LUX-ON FUNCTION WILL ONLY OPERATE WITHOUT MOTION WHEN STANDBY IS SET TO + ∞.





## IP65 IN-LINE SILVAIR-READY BLUETOOTH CONTROL NODE W/ PASSIVE INFRARED OCCUPANCY SENSOR

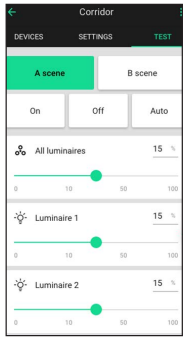
ORDERING **RP-LBI65-BLE-PIR-A**, IN ADDITION TO THE LBI 65 PART NUMBER, UPGRADES THE FIXTURE W/ A FACTORY INSTALLED **NETWORK LIGHTING CONTROL**. ONCE CONNECTED THROUGH THE SILVAIR APP, THE BLUETOOTH MICROWAVE MOTION SENSOR AND DAYLIGHT HARVESTING TECHNOLOGY CAN MAXIMIZE ENERGY SAVINGS.



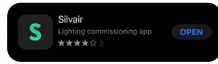
### ATTRIBUTES

<b>DETECTION TECHNOLOGY</b>	PASSIVE INFRARED (PIR)
<b>DETECTION TYPE</b>	OCCUPANCY / VACANCY
<b>SENSOR POWER</b>	12VDC
<b>GROUPABLE</b>	YES
<b>NETWORK LIGHTING CONTROL</b>	YES
<b>COMMISSIONING METHOD</b>	SILVAIR APP + IR REMOTE FOR RANGE SETTING
<b>REMOTE</b>	N/A
<b>DAYLIGHT HARVESTING</b>	YES
<b>HI OR LOW TRIM</b>	YES
<b>BI-LEVEL DIMMING</b>	YES
<b>NETWORK TECHNOLOGY</b>	BLUETOOTH
<b>INSTALLATION TYPE</b>	INTERNAL
<b>DLC LISTED</b>	YES + DLC NLC
<b>CONTROL CAPACITY</b>	15 BARS

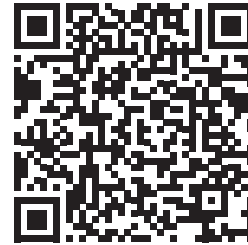
### SILVAIR APP



SILVAIR IS A SOFTWARE AND COMMISSIONING APP THAT CONNECTS AND CONTROLS LIGHTING FIXTURES USING BLUETOOTH MESH TECHNOLOGY.

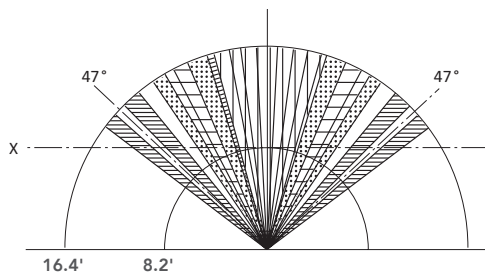


FOR MORE INFORMATION ON THE SILVAIR APP SCAN BELOW OR SEE PG. 13

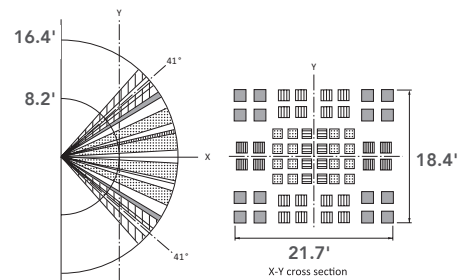


### DETECTION PATTERN / RP-LBI-BLE-PIR-A

TOP VIEW



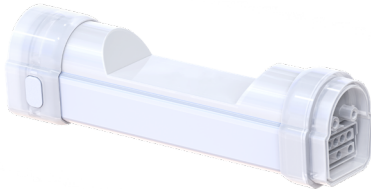
SIDE





## IP65 IN-LINE SILVAIR-READY BLUETOOTH CONTROL NODE

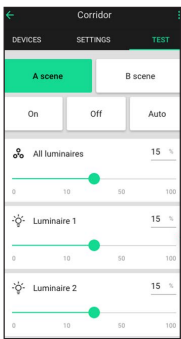
ORDERING **RP-LBI65-BLE-A**, IN ADDITION TO THE LBI 65 PART NUMBER, UPGRADES THE FIXTURE W/ A FACTORY INSTALLED **NETWORK LIGHTING CONTROL**. ONCE CONNECTED THROUGH THE SILVAIR APP, THE BLUETOOTH MICROWAVE MOTION SENSOR AND DAYLIGHT HARVESTING TECHNOLOGY CAN MAXIMIZE ENERGY SAVINGS.



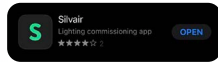
### ATTRIBUTES

<b>DETECTION TECHNOLOGY</b>	MICROWAVE
<b>DETECTION TYPE</b>	OCCUPANCY / VACANCY
<b>SENSOR POWER</b>	12VDC
<b>GROUPABLE</b>	YES
<b>NETWORK LIGHTING CONTROL</b>	YES
<b>COMMISSIONING METHOD</b>	SILVAIR APP
<b>REMOTE</b>	N/A
<b>DAYLIGHT HARVESTING</b>	YES
<b>HI OR LOW TRIM</b>	YES
<b>BI-LEVEL DIMMING</b>	YES
<b>NETWORK TECHNOLOGY</b>	BLUETOOTH MESH
<b>INSTALLATION TYPE</b>	INTERNAL
<b>DLC LISTED</b>	YES + DLC NLC
<b>CONTROL CAPACITY</b>	15 BARS

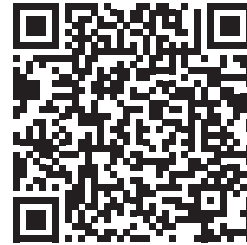
### SILVAIR APP



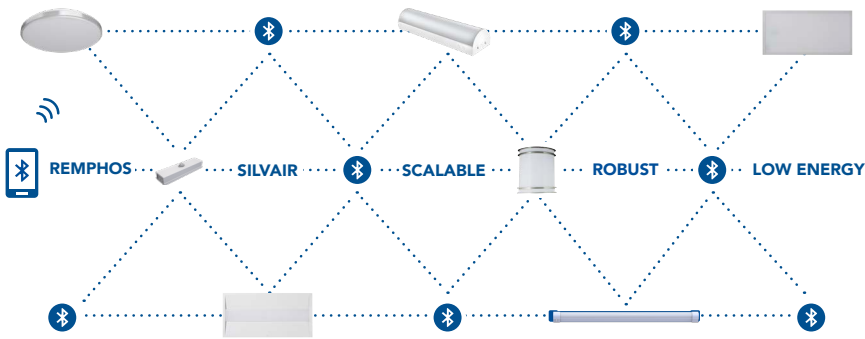
SILVAIR IS A SOFTWARE AND COMMISSIONING APP THAT CONNECTS AND CONTROLS LIGHTING FIXTURES USING BLUETOOTH MESH TECHNOLOGY.



FOR MORE INFORMATION ON THE SILVAIR APP SCAN BELOW OR SEE PG. 13



# RemPhos SILVAIR APP + COMMISSIONING OVERVIEW



## WHAT IS SILVAIR?

Silvaair is a software and commissioning app that connects and controls lighting fixtures using Bluetooth mesh technology.

## HOW DOES IT CONNECT?

Silvaair can be set up in advance through the cloud and the Silvaair portal. It can also be commissioned in the field with the IOS app.

## DOWNLOAD SILVAIR APPS



MOBILE APP Apple App Store  
or  
WEB APP [platform.silvaair.com](http://platform.silvaair.com)

