

BEVEL 28 BUNDLE

Recessed Mount Channel Bundle

The Bevel 28 is a traditional recessed mount channel with a twist. It features an 28° angle mounting surface for tape light, shining light in a specific direction. It is perfect for sophisticated task lighting and accent lighting situations.

- Mounting channel for tape light
- Maximum recommended wattage per foot of tape light < 3.6W/ft (12W/M)
- Angled profile for directional illumination
- Frosted, UV & flame resistant lens protects light source while evenly diffusing light
- Lightweight anodized aluminum provides excellent heat dissipation
- Field cuttable channel and lens
- Compatible with 10mm wide tape light
- Pressure-fit installation

Available Finishes

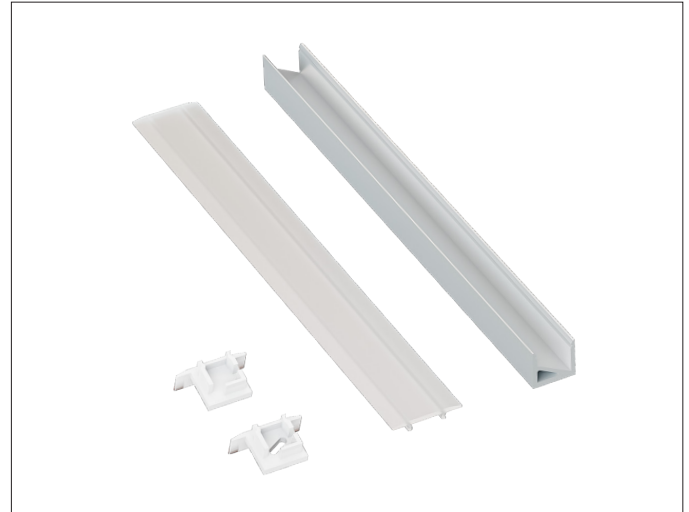


Anodized Aluminum

Compatible Tape Light

- Single Color (10mm)
- Tunable CCT (10mm)

PROJECT:
TYPE:
LOCATION:
CATALOG NUMBER:



BEVEL 28 BUNDLE ORDERING INFORMATION

ITEM NUMBER	DESCRIPTION
PE-B28-2M-BNDL1	2M Bevel 28 Single Bundle Includes: (1) 2M Bevel 28 Channel, (1) 2M High Grade Diffusion Lens, (1) End Cap w/ Hole, (1) End Cap w/o Hole

BEVEL 28 DIMENSIONS

