



# LED LINEAR HIGH BAY WITH Q-BASE

## WHB5B STANDARD series

► **DESIGN** - LED LINEAR HIGH BAY WITH Q-BASE STANDARD SERIES is extremely efficient with a 170lm/W output. It has a built-in Q-base, allowing you to install the microwave motion or PIR sensor. Die-cast aluminum housing with excellent heat dissipation along with an anti-glare PC lens provide many years of use. Surge protection 6kV protects the fixture from voltage spikes and current surges.

► **VARIETY** - Fixture is designed to operate on 120-277V or 200-480V circuits.

► **COLOR AND POWER SELECTABLE** - You can choose either a 3500K neutral white, 4000K cool white or 5000K daylight color temperature, and change the power with a simple switch.

► **INSTALLATION** - This fixture supports three different mounting styles: a suspended setup for a floating appearance, a surface-mounted option for a flush fit, and a pendant-style installation for a stylish, hanging effect.

► **ADVANTAGES** - With calculated lifespan up to 167 000 hours, these fixtures are made to last decades under normal operation! ASD provides a 5-year limited warranty along with UL and DLC Premium certifications to guarantee top quality products and safety!



### PRODUCT PRESENTATION:

Model	Power	Sensor base	Voltage	Dimming	Lumens	Lumens/watts	CCT	Finish	Dimensions	Certification
<b>WHB5B-ST 120-277V</b>										
ASD-WHB5B-ST-100	60/80/100 W	3-pin	120-277 V	0-10 V	16,366 lm	170 lm/W	3,500/4,000/5,000 K	White	14-15/16' x 9-13/16' x 2-15/16'	UL (E473804), DLC
ASD-WHB5B-ST-160	100/130/160 W	3-pin	120-277 V	0-10 V	25,521 lm	170 lm/W	3,500/4,000/5,000 K	White	14-15/16' x 9-13/16' x 2-15/16'	UL (E473804), DLC
ASD-WHB5B-ST-220	130/160/220 W	3-pin	120-277 V	0-10 V	36,274 lm	170 lm/W	3,500/4,000/5,000 K	White	17-11/16' x 12-7/16' x 2-15/16'	UL (E473804), DLC
ASD-WHB5B-ST-320	160/220/320 W	3-pin	120-277 V	0-10 V	52,194 lm	170 lm/W	3,500/4,000/5,000 K	White	20-1/2' x 14-7/16' x 3-1/4'	UL (E473804), DLC
ASD-WHB5B-ST-500	320/400/500 W	3-pin	120-277 V	0-10 V	76,668 lm	170 lm/W	3,500/4,000/5,000 K	White	35-1/2' x 12-7/16' x 2-15/16'	UL (E473804), DLC
<b>WHB5BHV-ST 200-480V</b>										
ASD-WHB5BHV-ST-220	130/160/220 W	3-pin	200-480 V	0-10 V	36,031 lm	170 lm/W	3,500/4,000/5,000 K	White	17-11/16' x 12-7/16' x 2-15/16'	UL (E473804), DLC
ASD-WHB5BHV-ST-320	160/220/320 W	3-pin	200-480 V	0-10 V	51,322 lm	170 lm/W	3,500/4,000/5,000 K	White	20-1/2' x 14-7/16' x 3-1/4'	UL (E473804), DLC

For detailed luminous flux information please refer to Annex 1, page 7.

For most up-to-date spec sheets please refer to [asd-lighting.com](http://asd-lighting.com)

**ASD LIGHTING CORP**

E-mail: [orders@asd-lighting.com](mailto:orders@asd-lighting.com) | Web site: [www.asd-lighting.com](http://www.asd-lighting.com)





# LED LINEAR HIGH BAY WITH Q-BASE

## WHB5B STANDARD series

### TECHNICAL PARAMETERS:

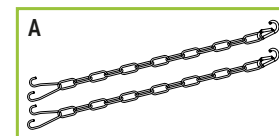
Model	Max input current	Inrush current	Work environment	Operating temperature	Power factor	Surge protection	Housing	Lens	CRI
<b>WHB5B-ST 170lm/W 120-277V</b>									
ASD-WHB5B-ST-100	1.3 A	80 A	Damp location	-40°F to 122°F (-40°C to 50°C)	> 0,9	6 kV	Aluminum	PC	> 80
ASD-WHB5B-ST-160	2 A	80 A	Damp location	-40°F to 122°F (-40°C to 50°C)	> 0,9	6 kV	Aluminum	PC	> 80
ASD-WHB5B-ST-220	2.6 A	80 A	Damp location	-40°F to 122°F (-40°C to 50°C)	> 0,9	6 kV	Aluminum	PC	> 80
ASD-WHB5B-ST-320	4 A	100 A	Damp location	-40°F to 122°F (-40°C to 50°C)	> 0,9	6 kV	Aluminum	PC	> 80
ASD-WHB5B-ST-500	6 A	80 A	Damp location	-40°F to 122°F (-40°C to 50°C)	> 0,9	6 kV	Aluminum	PC	> 80
<b>WHB5BHV-ST 170lm/W 200-480V</b>									
ASD-WHB5BHV-ST-220	0.92 A	80 A	Damp location	-40°F to 122°F (-40°C to 50°C)	> 0,9	6 kV	Aluminum	PC	> 80
ASD-WHB5BHV-ST-320	1.4 A	130 A	Damp location	-40°F to 122°F (-40°C to 50°C)	> 0,9	6 kV	Aluminum	PC	> 80

### DIMMING COMPATIBLE CONTROLS:

Brand	Lutron	Leviton
Models	DVSTV-453P	IP710-LFZ

### PACKAGE CONTENTS:

Description	Quantity
LED Linear High Bay with Q-Base	1
Hanging kit: V hook, chain 3.2 ft (A)	1
Box	1



### ACCESSORIES (sold separately):

<b>Microwave motion sensor 3pin</b> ASD-09MW 	<b>Infrared motion sensor 3pin</b> ASD-09IR 	<b>Infrared motion sensor 3pin 50ft</b> ASD-09IR50 	<b>Clear lens 60°</b>   <b>for 220W</b> ASD-L60-220-WHB5B   <b>for 320W</b> ASD-L60-320-WHB5B
<b>Remote control for motion sensor</b> ASD-06RC 	<b>Battery back-up kit</b>   <b>20W</b> ASD-EMK20W-WHB5B <b>30W</b> ASD-EMK30W-WHB5A	<b>Surface mounting bracket</b> ASD-SMB1-WHB5   M4*6mm	<b>Pendant mount bracket for 100-220W</b> ASD-PMB1-WHB5   M4*6mm Tube

### ACCESSORY COMPATIBILITY LIST:

Models	Accessories	Microwave motion sensor 3pin	Infrared motion sensor 3pin	Battery back-up kit 20W	Battery back-up kit 30W	Surface mount bracket	Pendant mounting bracket	Clear lens 60° for 220W	Clear lens 60° for 320W
		ASD-09MW	ASD-09IR ASD-09IR50	ASD-EMK20W-WHB5B	ASD-EMK30W-WHB5A	ASD-SMB1-WHB5	ASD-PMB1-WHB5	ASD-L60-220-WHB5B	ASD-L60-320-WHB5B
ASD-WHB5B-ST	100W	•	•	•	•	•	•		
	160W	•	•	•	•	•	•		
	220W	•	•	•	•	•	•	•	
	320W	•	•	•	•	•	•		•
	500W	•	•	•	•	•	•		
ASD-WHB5BHV-ST	220W	•	•			•	•	•	
	320W	•	•			•	•		•

For most up-to-date spec sheets please refer to [asd-lighting.com](http://asd-lighting.com)



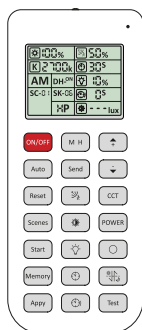


# LED LINEAR HIGH BAY WITH Q-BASE

## WHB5B STANDARD series

### MOTION SENSOR INFORMATION

REMOTE CONTROL **ASD-06RC** sold separately



Button	Remarks	Button	Remarks	Button	Remarks
<b>ON/OFF</b>	ON/OFF Turn the sensor ON/OFF.	<b>M H</b>	Mounting height Adjust detection area/sensitivity levels according to real installation situations, higher or lower.	<b>Up</b>	The main functional buttons to adjust the factors to desired level.
<b>Auto</b>	Auto Enter "sensor mode" and perform previous settings.	<b>Send</b>	Send Memorize and send out the previous setting of individual parameters.	<b>Down</b>	Press + - button to dim light directly auto in non-detection mode.
<b>Reset</b>	Reset Enter "sensor mode" and perform the default settings.	<b>Detection range</b>	Detection range Also known as "sensitivity", 100 % means the highest sensitivity and longest distance. Use this button and the + - buttons to adjust.	<b>CCT selectable</b>	Not applicable to this product.
<b>Scenes</b>	Scenes Shows current settings saved in remote.	<b>Daylight sensor</b>	Daylight sensor The preset lux level at which motion will be detected. Use this button and the + - buttons to adjust.	<b>POWER</b>	Power Adjust brightness in both ON/OFF mode & sensor mode, minimum 10%, max 100%, each time this button is pressed it changes by 5%.
<b>Start</b>	Start Press this to begin scene setup.	<b>Stand-by dimming</b>	Stand-by dimming After hold time, the light will dim from 100 % to optional standby dimming levels. Use this button and the + - buttons to adjust.	<b>Reserved button</b>	Not applicable to this product.
<b>Memory</b>	Memory Saves the scene settings.	<b>Hold time</b>	Hold time The period that light will stay illuminated 100 % after no motion is detected. Use this button and the + - buttons to adjust.	<b>Daylight harvesting</b>	Daylight harvesting function enabled or disabled.
<b>Apply</b>	Apply Applies current scene settings to the fixture.	<b>Stand-by period</b>	Stand-by period The period after holdtime, during which the light keeps standby dimming level. Use this button and the + - buttons to adjust.	<b>Test button</b>	Press this button to test the sensor; it will temporarily change the hold time to 2s. This setting cannot be saved.



ASD-09MW  
Microwave motion sensor 3pin



ASD-06RC  
Remote control



ASD-09IR  
Infrared motion sensor 3pin



ASD-06RC  
Remote control

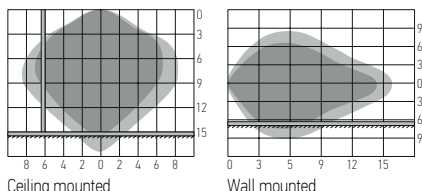


ASD-09IR50  
Infrared motion sensor 3pin



ASD-06RC  
Remote control

### MICROWAVE MOTION SENSOR:



Highest mounting height is 49.2 ft (15 m). This figure indicates the maximum distance at the highest mounting height with 100 % sensitivity.

Well detected area  
Possibly detected area

Ceiling mounted

Wall mounted

#### User notes:

- Microwaves can penetrate walls or glass thinner than 0.8" but will be impaired if thicker than 0.8".
- The driver voltage shall be stable and float within 10 %.
- Detection area will be affected by speed of motion, mounting height and movement volume.
- Conduct testing with adequate ambient lighting for best results.
- Dimming performance differs when connected to different drivers; if the driver can't completely turn OFF, sensor can't either.
- The first time powered ON sensor, light will be ON 100% for about 10S then dims to standby level or OFF.

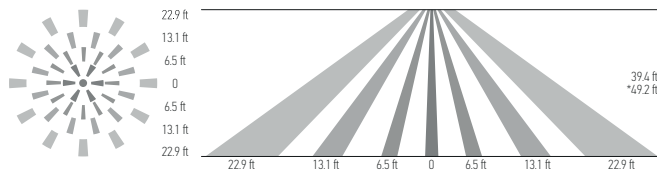
#### Installation precautions:

- Suitable for ceiling mount installation, adjust sensitivity properly if it's installed on side-wall because it gets more sensitive.
- Make sure the microwave module is completely exposed.
- The detection surface of the sensor module should be installed facing the detection area.

#### Application environment:

- Suitable for indoor application, half/completely outdoor environment conditions might trigger the sensor.
- Should be mounted securely, to avoid any false triggers caused by movement of the fixture itself.
- Keep the sensor module away from AC input and DC output to avoid high/low frequency signal interference.

### INFRARED MOTION SENSOR:



Mounting height < 39.4 ft (12 m) ceiling mounting (\* for ASD-09IR50 < 49.2 ft (15 m))

#### User notes:

- The driver voltage shall be stable and float within 10%.
- Detection area options may not function as expected because they depend on the Fresnel lens, which physically determines their operation.
- Detection distance performance works better when moving parallel to the sensor as opposed to towards it.
- Conduct testing with adequate ambient lighting for best results.
- Dimming performance differs when connected to different drivers; if the driver can't completely turn OFF, sensor can't either.
- The first time powering ON the sensor, light will be ON 100% for about 45S then dims to standby level or OFF.

#### Installation precautions:

- PIR sensor can't be placed inside any material, fresnel lens must be completely exposed in air.
- Fresnel lens of the PIR sensor must be lower than light fixture.
- Suitable for ceiling mount installation, adjust sensitivity properly if it's installed on a wall because it will become more sensitive.

#### Application environment:

- Suitable for indoor application, partial/completely outdoor environment conditions might trigger the sensor.
- The PIR sensor is not suitable for environments with sudden changes in temperature or airflow.
- Not suitable environment if there's shelves between the sensor and target area.
- Should be mounted securely, to avoid any false triggers caused by movement of the fixture itself.

Specifications	models: ASD-09MW	models: ASD-09IR	models: ASD-09IR50	Default setting
Detection area	25 %/50 %/75 %/100 %			100 %
Hold time	<b>Remote control:</b> 5 s/30 s/1 min/3 min/5 min/10 min/20 min/30 min <b>Built-in switch:</b> 5 s/1 min/5 min/10 min			10 min
Daylight threshold	2 lux (0.2 fc)/10 lux (0.9 fc)/30 lux (2.8 fc)/50 lux (4.7 fc)/80 lux (7.4 fc)/120 lux (11.2 fc)/200 lux (18.6 fc)/250 lux (23.2 fc)/ 300 lux (27.9 fc)/350 lux (32.5 fc)/400 lux (37.2 fc)/disable			Disable
Standby period	0 s/10 s/30 s/1 min/5 min/10 min/30 min/60 min/+∞			0 s
Standby dimming level	<b>Remote control:</b> 10 %/20 %/30 %/50 % <b>Built-in switch:</b> 0 %/10 %/30 %/50 %			10 %
Operating voltage	10 - 15 V			-
Operating current	< 30 mA			-
Mounting height	max 49.2 ft (15 m)	< 15 mA	max 39.4 ft (12 m)	max 49.2 ft (15 m)
Detection range	≥ 9 ft (3 m)			-
Operating frequency	5.8 GHz ± 75 MHz			-
Transmitting power	< 0.3 mW			-

For most up-to-date spec sheets please refer to [asd-lighting.com](http://asd-lighting.com)

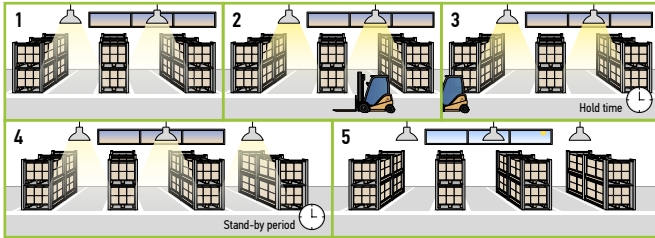


# LED LINEAR HIGH BAY WITH Q-BASE

## WHB5B STANDARD series

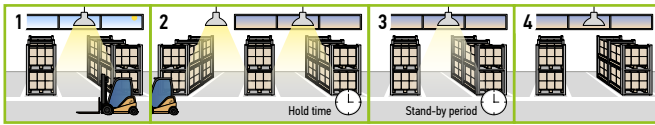
### WITH DUSK/DAWN FUNCTION:

1. With insufficient ambient brightness, sensor turns on light and keeps it at standby dimming level even if there is no motion or presence.
2. When sensor detects motion or presence it will bring the light level up to 100%.
3. After motion is no longer detected, fixture remains at 100% for hold time.
4. After the preset hold time period, it will dim to the standby dimming level and maintain it indefinitely.
5. With sufficient ambient brightness, sensor will turn OFF light automatically.



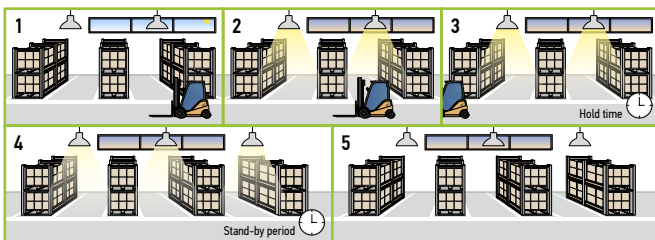
### WITH DAYLIGHT DISABLED:

1. Sensor turns ON light when motion is detected.
2. Light will stay on after detecting motion for the desired hold time.
3. Sensor dims light to standby dimming level after hold time if there is still no motion.
4. Sensor turns OFF light after standby period.



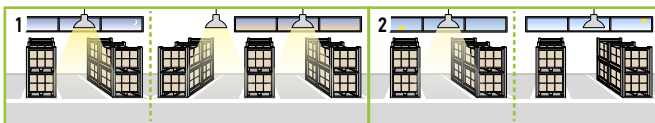
### WITH DAYLIGHT THRESHOLD:

1. With sufficient daylight, the light remains OFF even after motion is detected.
2. With insufficient daylight, the sensor turns light ON when motion is detected.
3. After there's no motion detected, the sensor keeps light ON 100% for holdtime.
4. After holdtime, sensor dims light to standby dimming level for standby period. If the standby period has been set as 0s, sensor turns light OFF automatically after holdtime.
5. The sensor turns OFF light automatically after the standby period when there's no motion detected.



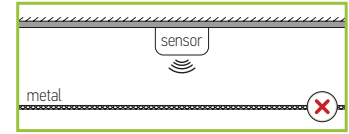
### DAYLIGHT HARVESTING:

1. When the ambient brightness is lower than the preset lux level, the sensor will automatically turn on the light and adjust the dimming according to changes in ambient brightness. As it gets darker outside, the fixtures will brighten, and as it gets brighter outside, the fixtures will dim.
2. When the ambient brightness exceeds the preset lux level, the light will turn OFF.

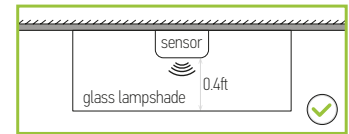


### MICROWAVE MOTION SENSOR:

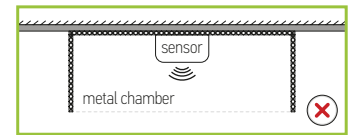
To avoid blocking the microwave emission, the microwave sensor can not be covered with metal materials, be sprayed with a coating of metal components, or have attached metal material or stickers etc.



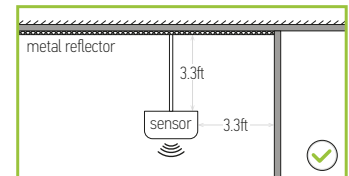
The distance between the antenna and the glass (dielectric material) should be no less than 0.4 ft when the sensor is within the glass lampshade. Otherwise, the microwave motion sensor will not penetrate the glass easily.



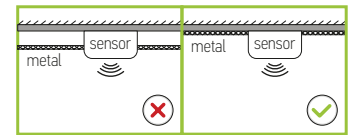
Avoid placing the sensor inside a metal chamber, this may cause a mis-trigger.



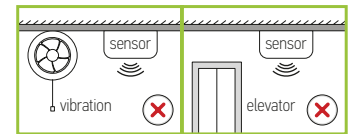
The sensor should not be placed in a small confined space. To avoid increasing the sensor detection range or abnormal operation, the sensor should be kept away from large areas of metal and glass reflectors (separation distance at least 3.3 ft). Reduce the detection area setting.



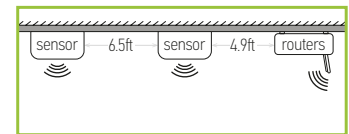
To avoid affecting the microwave signal transmission, the microwave antenna should be higher than the surrounding metal surface.



Any vibration or movement may trigger the sensor. Ensure the sensor is far from any constant movement.

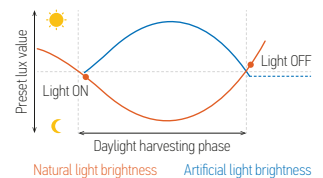


At least 2 m/6.5 ft distance between microwave sensors; 1.5 m/4.9 ft between the sensor and other wireless devices such as routers to avoid possible radio interference.



### DAYLIGHT HARVESTING SETTING:

1. Adjust "daylight" value higher than 50lux.
2. Preset "standby period" 0s.
3. Press "daylight harvesting" button on remote control to activate.



For most up-to-date spec sheets please refer to [asd-lighting.com](http://asd-lighting.com)



# LED LINEAR HIGH BAY WITH Q-BASE




WHB5B STANDARD series

## BACK-UP BATTERY KIT INFORMATION

ASD-EMK20W-WHB5B ASD-EMK30W-WHB5A sold separately



### STANDARD OPERATION DISPLAY STATUS:

Button	Remarks	Specifications	ASD-EMK20W-WHB5B	ASD-EMK30W-WHB5A
 ON	Charging mode, AC power is ON	Input voltage	100-347 Vac 50/60 Hz	
		Voltage	120 V	
		Output voltage	156 - 230 Vdc	156 - 230 Vdc
		Input current	100 mA	
		Output current	70 mA	
		Power	20W	30W
		Lumen	3,189 lm	4,783 lm
		Emergency time	90 minutes	
		Indicator light	Illuminated test switch	
		Battery	Li-ion	
		Charging time	≥ 24 hours	
 Blinking slowly	Emergency mode, Battery is discharging, AC power is OFF			
 Blinking quickly	Test failure			

### INSTALLATION STEPS:

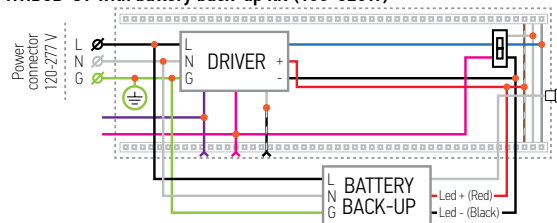
- Unscrew and open Battery back-up kit.
- Remove one knock-out on the top and one on the side of the driver box. Attach the battery backup kit to the driver box of the fixture with 4 screws.
- Unscrew 4 screws and open driver box of the fixture. Install battery back-up button into the side knockout of the fixture and secure it with washer (included). Then pull the button wire into the battery back-up kit and plug it into the battery controller.
- Connect battery back-up kit to the fixture by:
  - Pulling the Red wire (DRIVER +) from battery back-up into the fixture and connecting it to the Red wire (Driver output +);
  - Pull the Black wire (LED- / DRIVER -) from battery back-up into the fixture and connect it with the Black wire (Driver output -), Led1 (input -) and Led2 (-) using one connector (included);
  - Pull the White wire (LED +) from battery back-up into the fixture and connect it with the Led1 (+) and Led2 (+) using one connector (included);
- Pull the White (N), Black (L), Green (G), Pink (Dim-) and Violet (Dim+) wires from the fixture into the battery back-up kit and connect them with the wires of battery back-up and external power source: Black with Black, White with White, Green with Green, according to the wiring schematic. Use white extension wire (included) if needed. Use pink (Dim-) and violet (Dim+) dimming wires if needed to connect to the dimmer.
- Attach fixture driver box cover with battery back-up kit to the fixture and secure it with screws.

Self-check emergency battery back-up kit offers a dependable solution for virtually every LED Linear High Bay lighting application, with options tailored for both new fixture constructions and field installation applications.

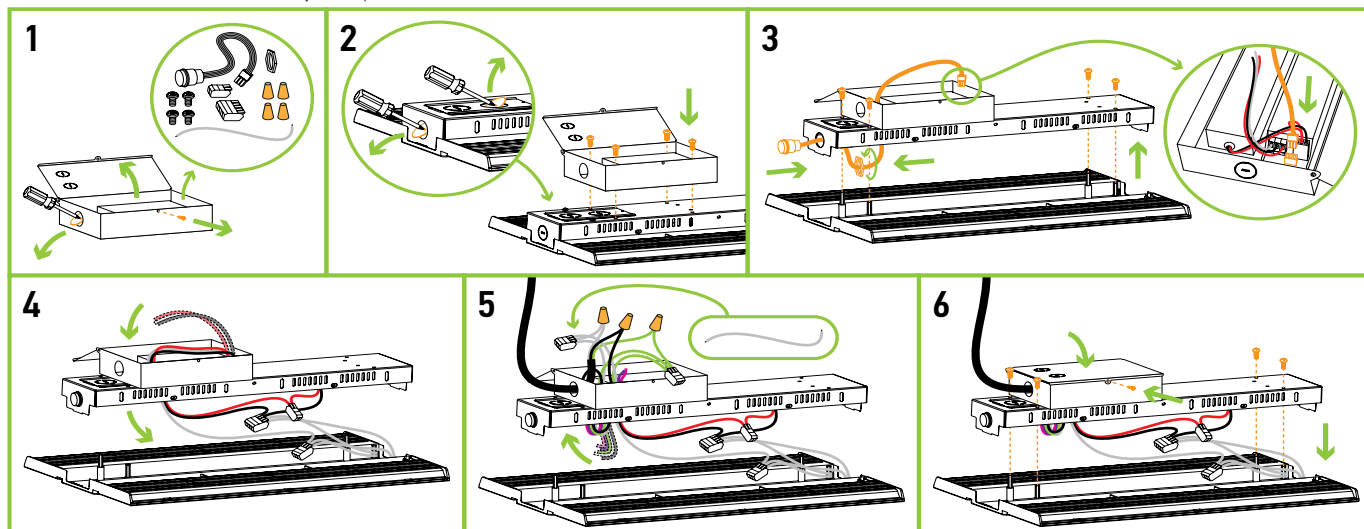
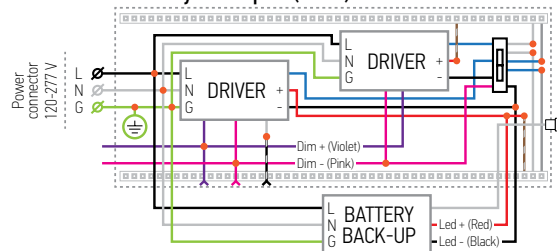
### CAUTION:

- Before performing a high-voltage insulation test, ensure the battery pack is removed and that there is no contact between the battery pack and the LED drivers.
- After testing, disconnect the battery pack unit connector before shipping and storing.
- During storage, the battery pack will need 24 hours of charging every 3 months.

#### WHB5B-ST with battery back-up kit (100-320W)



#### WHB5B-ST with battery back-up kit (500W)



For most up-to-date spec sheets please refer to [asd-lighting.com](http://asd-lighting.com)

ASD LIGHTING CORP

E-mail: [orders@asd-lighting.com](mailto:orders@asd-lighting.com) | Web site: [www.asd-lighting.com](http://www.asd-lighting.com)





# LED LINEAR HIGH BAY WITH Q-BASE

WHB5B STANDARD series

## INSTALLATION GUIDE

### IMPORTANT SAFETY INFORMATION:

Please read all the instructions below before installation!

- ▶ Make sure that the supply voltage corresponds to the rated product voltage.
- ▶ The product must be installed by a qualified electrician in accordance with the National Electrical Code and corresponding local codes.
- ▶ If the product is damaged, do not use it.

### ⚠ WARNING

**Risk of personal injury** – read and follow all warnings and installation instructions. Keep or give to the owner for future reference.

**Risk of cuts:** Wear gloves to prevent cuts or abrasions when removing from carton, handling, installing, and maintaining this product.

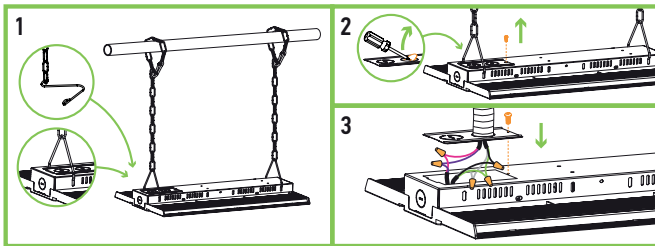
**Risk of electric shock:** This product must be installed in accordance with the applicable installation code by a person familiar with the construction and operation of the product and the hazards involved.

**Risk of Fire:** Minimum 194°F supply conductors. Consult a qualified electrician to ensure correct branch circuit conductor.

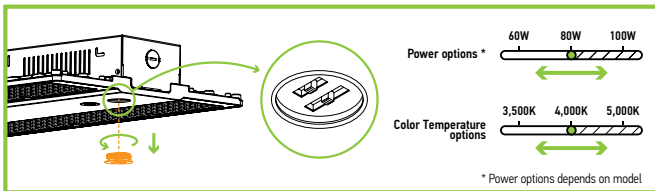
ASD® assumes no responsibility for claims arising out of improper or careless installation or handling of this product.

### INSTALLATION STEPS:

1. Insert V-hooks into both ends of the fixture. Secure chain to ceiling, beam or other mounting surface.
2. Unscrew and open backplate, use screwdriver to open one knockout.
3. Connect the wires: Black to Black, White to White, Green to Green. If you are not using the dimming wires cap them off but not together. Reattach knockout plate to top of the fixture and secure with screw.



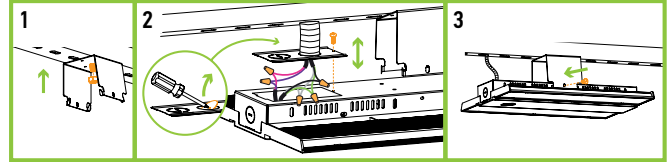
### POWER AND COLOR TEMPERATURE SETTINGS:



### SURFACE MOUNT INSTALLATION:

**ASD-SMB1-WHB5** sold separately

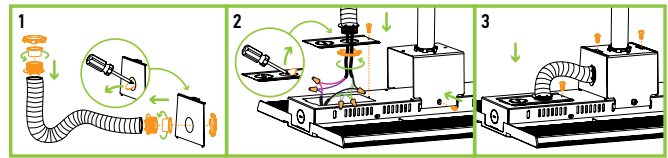
1. Secure the brackets to ceiling, beam, joist or rail (bolts not included).
2. Connect the wires: Black to Black, White to White, Green to Green.
3. Attach the fixture to the bracket and secure with one screw per each side of the bracket.



### PENDANT MOUNT INSTALLATION:

**ASD-PMB1-WHB5** sold separately

1. Assemble metal hose with connectors and attach bracket's side plate to one side. Install the bracket on 3/4" NPT pipe. Bracket does not include nuts or screws for mounting to surface.
2. Unscrew and take off fixture's backplate, open one knockout using screwdriver. Then attach backplate to free end of the metal hose. Attach the bracket by putting the bracket's hooks into the slots in the center of the housing. Secure the bracket with screws. Connect the wires: Black to Black, White to White, Green to Green.
3. Reattach the backplate in its place and secure with screw. Align the studs of the side plate with the slots in the housing, place the side plates, and secure them with screws.

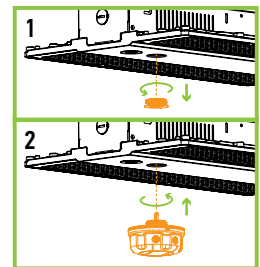


### MOTION SENSOR INSTALLATION:

**ASD-09MW ASD-09IR ASD-09IR50**

sold separately

1. Unscrew the microwave sensor base cap.
2. Insert and twist the sensor until it is tight on the base surface.



For most up-to-date spec sheets please refer to [asd-lighting.com](http://asd-lighting.com)



# LED LINEAR HIGH BAY WITH Q-BASE

## WHB5B STANDARD series

## ORDERING INFORMATION

Model	Product dimensions	Weight	Pcs. per carton	Carton size	Carton weight	UPC
<b>WHB5B-ST 170lm/W 120-277V</b>						
ASD-WHB5B-ST-100	14-15/16" x 9-13/16" x 2-15/16"	4.1 lbs (1.9 kg)	1	15.9" x 10.6" x 3.7"	5.5 lbs	810128116824
ASD-WHB5B-ST-160	14-15/16" x 9-13/16" x 2-15/16"	5 lbs (2.3 kg)	1	15.9" x 10.6" x 3.7"	6.4 lbs	810128116541
ASD-WHB5B-ST-220	17-11/16" x 12-7/16" x 2-15/16"	7 lbs (3.2 kg)	1	18.7" x 13.2" x 3.7"	8.8 lbs	810128116558
ASD-WHB5B-ST-320	20-1/2" x 14-7/16" x 3-1/4"	9.2 lbs (4.2 kg)	1	21.5" x 15.2" x 4"	11.2 lbs	810128116572
ASD-WHB5B-ST-500	35-1/2" x 12-7/16" x 2-15/16"	14.2 lbs (6.4 kg)	1	36.5" x 13.2" x 3.7"	17.5 lbs	810128116589
<b>WHB5BHV-ST 170lm/W 200-480V</b>						
ASD-WHB5BHV-ST-220	17-11/16" x 12-7/16" x 2-15/16"	7 lbs (3.2 kg)	1	18.7" x 13.2" x 3.7"	8.8 lbs	810128116831
ASD-WHB5BHV-ST-320	20-1/2" x 14-7/16" x 3-1/4"	9.2 lbs (4.2 kg)	1	21.5" x 15.2" x 4"	11.2 lbs	810128116848

## ACCESSORIES:

Model	Product dimensions	Pcs. in middle box	Middle box size	Middle box weight	Pcs. per carton	Carton size	Carton weight	UPC	GTIN 14 in middle box	GTIN 14 in carton
ASD-09MW-WH	2-1/8" x 2-1/8" x 1-5/16"	10	5.5" x 2.6" x 11.4"	1.2 lbs	120	17.3" x 11.8" x 11"	12.1 lbs	810128113700	20810128113704	30810128113701
ASD-09MW-BK	2-1/8" x 2-1/8" x 1-5/16"	10	5.5" x 2.6" x 11.4"	1.2 lbs	120	17.3" x 11.8" x 11"	12.1 lbs	810128113717	20810128113711	30810128113718
ASD-09IR-WH	2-1/8" x 2-1/8" x 1-11/16"	10	5.5" x 2.6" x 11.4"	1.2 lbs	120	17.3" x 11.8" x 11"	12.1 lbs	810128113694	20810128113698	30810128113695
ASD-09IR-BK	2-1/8" x 2-1/8" x 1-11/16"	10	5.5" x 2.6" x 11.4"	1.2 lbs	120	17.3" x 11.8" x 11"	12.1 lbs	810128114349	20810128114343	30810128114340
ASD-09IR50-WH	2-1/8" x 2-1/8" x 1-11/16"	10	5.5" x 2.6" x 11.4"	0.9 lbs	120	17.3" x 11.8" x 11"	10.7 lbs	810128116794	10810128116791	20810128116798
ASD-06RC	5-11/16" x 1-3/4" x 13/16"	10	6.3" x 2.9" x 11.4"	0.5 lbs	60	15.8" x 11.8" x 9.3"	24.7 lbs	810128114370	30810128114371	40810128114378
ASD-EMK20W-WHB5B	9-5/8" x 4-5/8" x 1-7/8"	-	-	-	10	10.5" x 10.2" x 11.5"	26.5 lbs	810128113977	-	10810128113974
ASD-EMK30W-WHB5A	9-5/8" x 4-5/8" x 1-7/8"	-	-	-	10	10.5" x 10.2" x 11.5"	26.5 lbs	810050735933	-	10810050735930
ASD-SMB1-WHB5	4" x 3-11/16" x 3-1/16"	-	-	-	50	22.8" x 7.9" x 20.9"	24.3 lbs	810050739764	-	20810050739768
ASD-PMB1-WHB5	4" x 3-11/16" x 3-1/8"	-	-	-	50	22.8" x 7.9" x 20.9"	34.2 lbs	810050739757	-	20810050739751
ASD-L60-220-WHB5B	17-9/16" x 3-7/8" x 3/8"	-	-	-	20	18.4" x 8.5" x 6.6"	16 lbs	810128118491	-	20810128118495
ASD-L60-320-WHB5B	20-5/16" x 4-13/16" x 3/8"	-	-	-	20	21.2" x 10.3" x 6.6"	23.4 lbs	810128118507	-	20810128118501

## ANNEX 1

Model	Watts	3,500 K	4,000 K	5,000 K
ASD-WHB5B-ST-100	60W	10,457 lm	10,830 lm	10,761 lm
	80W	13,308 lm	13,888 lm	13,600 lm
	100W	16,032 lm	16,848 lm	16,366 lm
ASD-WHB5B-ST-160	100W	17,016 lm	18,170 lm	18,099 lm
	130W	20,726 lm	22,301 lm	21,816 lm
	160W	24,191 lm	26,567 lm	25,521 lm
ASD-WHB5B-ST-220	130W	23,349 lm	24,359 lm	24,320 lm
	160W	27,722 lm	29,104 lm	28,470 lm
	220W	35,182 lm	37,871 lm	36,274 lm
ASD-WHB5B-ST-320	160W	28,811 lm	29,905 lm	29,927 lm
	220W	37,232 lm	39,588 lm	39,485 lm
	320W	49,300 lm	53,065 lm	52,194 lm
ASD-WHB5B-ST-500	320W	52,256 lm	55,249 lm	55,036 lm
	400W	63,160 lm	66,623 lm	65,166 lm
	500W	72,783 lm	79,787 lm	76,668 lm
ASD-WHB5B-HV-ST-220	130W	22,140 lm	23,343 lm	23,458 lm
	160W	26,627 lm	28,271 lm	27,963 lm
	220W	34,160 lm	37,158 lm	36,031 lm
ASD-WHB5B-HV-ST-320	160W	28,106 lm	29,289 lm	29,516 lm
	220W	36,810 lm	38,731 lm	38,197 lm
	320W	49,029 lm	53,090 lm	51,322 lm

For most up-to-date spec sheets please refer to [asd-lighting.com](http://asd-lighting.com)