



LED DOWNLIGHT RETROFIT KIT

► **DESIGN** - LED DOWNLIGHT RETROFIT KIT features a classic, low-profile design with a baffle trim for a stylish and efficient lighting solution. Designed for 120V circuits, it includes preinstalled TP24 and E26 connectors and spring-loaded clips for quick and easy installation. The acrylic lens with a 95° beam angle and CRI90+ provides even, high-quality light.

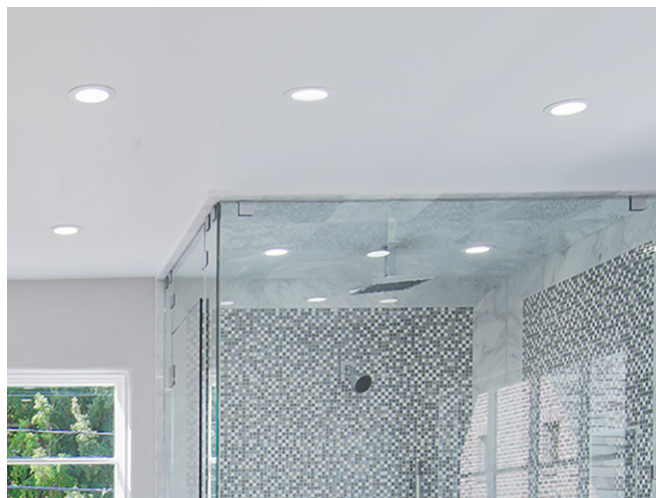
► **VARIETY** - This fixture is available in 4-inch and 6-inch round and square shapes, offered in White, Black, or Bronze finishes to match any design preference.

► **COLOR SELECTABLE** - Choose between 2700K soft white, 3000K warm white, 3500K neutral white, 4000K cool white, or 5000K daylight to find the ideal color temperature for your space.

► **DIMMING** - Smooth triac dimming capabilities ranging from 10% to 100% with modern LED dimmers allow you to control the look and feel of your space.

► **INSTALLATION** - This fixture is suitable for most new construction, remodeling, and shallow recessed lighting housings. It is also Damp and Wet Locations rated, making it perfect for kitchens, bathrooms or any other common areas.

► **ADVANTAGES** - With a lifespan of 50,000 hours, these fixtures are made to last decades under normal operation! ASD provides a 5-year limited warranty along with UL, ETL, ES and T24 JA8 certification to guarantee top quality products and safety!



PRODUCT PRESENTATION:

Model	Size	Power	Voltage	Dimming	Lumens	CCT	Finish	Location	Dimensions	Certification
LRKR ROUND										
ASD-LRKR-4D9AC-WH	4 inch	8.6 W	120V	Triac	702lm	2,700/3,000/3,500/4,000/5,000 K	White	Wet	5-1/16" x 5-1/16" x 2"	UL(E475148)
ASD-LRKR-4D9AC-BR	4 inch	8.6 W	120V	Triac	702lm	2,700/3,000/3,500/4,000/5,000 K	Bronze	Wet	5-1/16" x 5-1/16" x 2"	UL(E475148)
ASD-LRKR-4D9AC-BK	4 inch	8.6 W	120V	Triac	702lm	2,700/3,000/3,500/4,000/5,000 K	Black	Wet	5-1/16" x 5-1/16" x 2"	UL(E475148)
ASD-LRKR-4D9AC-WH-12PACK	4 inch	8.6 W	120V	Triac	702lm	2,700/3,000/3,500/4,000/5,000 K	White	Wet	5-1/16" x 5-1/16" x 2"	UL(E475148)
ASD-LRKR-4D9AC-BR-12PACK	4 inch	8.6 W	120V	Triac	702lm	2,700/3,000/3,500/4,000/5,000 K	Bronze	Wet	5-1/16" x 5-1/16" x 2"	UL(E475148)
ASD-LRKR-4D9AC-BK-12PACK	4 inch	8.6 W	120V	Triac	702lm	2,700/3,000/3,500/4,000/5,000 K	Black	Wet	5-1/16" x 5-1/16" x 2"	UL(E475148)
ASD-LRKR-6D12AC-WH	5 and 6 inch	12 W	120V	Triac	1,009lm	2,700/3,000/3,500/4,000/5,000 K	White	Wet	7-5/16" x 7-5/16" x 5/16"	UL(E475148)
ASD-LRKR-6D12AC-BR	5 and 6 inch	12 W	120V	Triac	1,009lm	2,700/3,000/3,500/4,000/5,000 K	Bronze	Wet	7-5/16" x 7-5/16" x 3-7/16"	UL(E475148)
ASD-LRKR-6D12AC-BK	5 and 6 inch	12 W	120V	Triac	1,009lm	2,700/3,000/3,500/4,000/5,000 K	Black	Wet	7-5/16" x 7-5/16" x 3-7/16"	UL(E475148)
ASD-LRKR-6D12AC-WH-12PACK	5 and 6 inch	12 W	120V	Triac	1,009lm	2,700/3,000/3,500/4,000/5,000 K	White	Wet	7-5/16" x 7-5/16" x 3-7/16"	UL(E475148)
ASD-LRKR-6D12AC-BK-12PACK	5 and 6 inch	12 W	120V	Triac	1,009lm	2,700/3,000/3,500/4,000/5,000 K	Black	Wet	7-5/16" x 7-5/16" x 3-7/16"	UL(E475148)
LRKR-M ROUND										
ASD-LRKR-M4D10WH	4 inch	10 W	120V	Triac	849lm	2,700/3,000/3,500/4,000/5,000 K	White	Wet	5-3/16" x 5-3/16" x 1-11/16"	ETL(5029309),ES,T24, JA8
ASD-LRKR-M4D10BR	4 inch	10 W	120V	Triac	849lm	2,700/3,000/3,500/4,000/5,000 K	Bronze	Wet	5-3/16" x 5-3/16" x 1-11/16"	ETL(5029309),ES,T24, JA8
ASD-LRKR-M4D10BK	4 inch	10 W	120V	Triac	849lm	2,700/3,000/3,500/4,000/5,000 K	Black	Wet	5-3/16" x 5-3/16" x 1-11/16"	ETL(5029309),ES,T24, JA8
ASD-LRKR-M4D10WH-12P	4 inch	10 W	120V	Triac	849lm	2,700/3,000/3,500/4,000/5,000 K	White	Wet	5-3/16" x 5-3/16" x 1-11/16"	ETL(5029309),ES,T24, JA8
ASD-LRKR-M4D10BR-12P	4 inch	10 W	120V	Triac	849lm	2,700/3,000/3,500/4,000/5,000 K	Bronze	Wet	5-3/16" x 5-3/16" x 1-11/16"	ETL(5029309),ES,T24, JA8
ASD-LRKR-M4D10BK-12P	4 inch	10 W	120V	Triac	849lm	2,700/3,000/3,500/4,000/5,000 K	Black	Wet	5-3/16" x 5-3/16" x 1-11/16"	ETL(5029309),ES,T24, JA8
ASD-LRKR-M6D12WH	6 inch	12 W	120V	Triac	1,078lm	2,700/3,000/3,500/4,000/5,000 K	White	Wet	7-3/16" x 7-3/16" x 1-5/8"	ETL(5029309),ES,T24, JA8

For most up-to-date spec sheets please refer to asd-lighting.com



LED DOWNLIGHT RETROFIT KIT

Model	Size	Power	Voltage	Dimming	Lumens	CCT	Finish	Location	Dimensions	Certification
ASD-LRKR-M6D12BR	6 inch	12 W	120V	Triac	1,078lm	2,700/3,000/3,500/4,000/5,000 K	Bronze	Wet	7-3/16" x 7-3/16" x 1-5/8"	ETL(5029309),ES,T24, JA8
ASD-LRKR-M6D12BK	6 inch	12 W	120V	Triac	1,078lm	2,700/3,000/3,500/4,000/5,000 K	Black	Wet	7-3/16" x 7-3/16" x 1-5/8"	ETL(5029309),ES,T24, JA8
ASD-LRKR-M6D12WH-12P	6 inch	12 W	120V	Triac	1,078lm	2,700/3,000/3,500/4,000/5,000 K	White	Wet	7-3/16" x 7-3/16" x 1-5/8"	ETL(5029309),ES,T24, JA8
ASD-LRKR-M6D12BR-12P	6 inch	12 W	120V	Triac	1,078lm	2,700/3,000/3,500/4,000/5,000 K	Bronze	Wet	7-3/16" x 7-3/16" x 1-5/8"	ETL(5029309),ES,T24, JA8
ASD-LRKR-M6D12BK-12P	6 inch	12 W	120V	Triac	1,078lm	2,700/3,000/3,500/4,000/5,000 K	Black	Wet	7-3/16" x 7-3/16" x 1-5/8"	ETL(5029309),ES,T24, JA8
LRKS SQUARE										
ASD-LRKS-4D9AC-WH-6PACK	4 inch	8.6 W	120 V	TRIAC	709lm	2,700/3,000/3,500/4,000/5,000 K	White	Wet	5" x 5" x 2-1/16"	UL(E475148)
ASD-LRKS-4D9AC-BZ-6PACK	4 inch	8.6 W	120 V	TRIAC	709lm	2,700/3,000/3,500/4,000/5,000 K	Bronze	Wet	5" x 5" x 2-1/16"	UL(E475148)
ASD-LRKS-4D9AC-BK-6PACK	4 inch	8.6 W	120 V	TRIAC	709lm	2,700/3,000/3,500/4,000/5,000 K	Black	Wet	5" x 5" x 2-1/16"	UL(E475148)
ASD-LRKS-6D12AC-WH-6PACK	6 inch	12 W	120 V	TRIAC	1,023lm	2,700/3,000/3,500/4,000/5,000 K	White	Wet	7-5/16" x 7-5/16" x 1-7/8"	UL(E475148)
ASD-LRKS-6D12AC-BZ-6PACK	6 inch	12 W	120 V	TRIAC	1,023lm	2,700/3,000/3,500/4,000/5,000 K	Bronze	Wet	7-5/16" x 7-5/16" x 1-7/8"	UL(E475148)
ASD-LRKS-6D12AC-BK-6PACK	6 inch	12 W	120 V	TRIAC	1,023 lm	2,700/3,000/3,500/4,000/5,000 K	Black	Wet	7-5/16" x 7-5/16" x 1-7/8"	UL(E475148)

TECHNICAL PARAMETERS:

Model	Work environment	Operating temperature	Power factor	Beam Angle	Surge protection	Housing	Lens	CRI
LRKR ROUND								
ASD-LRKR-4D9AC-WH	Wet location	-4°F to 104°F(-20°C to 40°C)	>0,8	90°	2kV	Plastic	PC	>90
ASD-LRKR-4D9AC-BR	Wet location	-4°F to 104°F(-20°C to 40°C)	>0,8	90°	2kV	Plastic	PC	>90
ASD-LRKR-4D9AC-BK	Wet location	-4°F to 104°F(-20°C to 40°C)	>0,8	90°	2kV	Plastic	PC	>90
ASD-LRKR-4D9AC-WH-12PACK	Wet location	-4°F to 104°F(-20°C to 40°C)	>0,8	90°	2kV	Plastic	PC	>90
ASD-LRKR-4D9AC-BR-12PACK	Wet location	-4°F to 104°F(-20°C to 40°C)	>0,8	90°	2kV	Plastic	PC	>90
ASD-LRKR-4D9AC-BK-12PACK	Wet location	-4°F to 104°F(-20°C to 40°C)	>0,8	90°	2kV	Plastic	PC	>90
ASD-LRKR-6D12AC-WH	Wet location	-4°F to 104°F(-20°C to 40°C)	>0,8	95°	2kV	Plastic	PC	>90
ASD-LRKR-6D12AC-BR	Wet location	-4°F to 104°F(-20°C to 40°C)	>0,8	95°	2kV	Plastic	PC	>90
ASD-LRKR-6D12AC-BK	Wet location	-4°F to 104°F(-20°C to 40°C)	>0,8	95°	2kV	Plastic	PC	>90
ASD-LRKR-6D12AC-WH-12PACK	Wet location	-4°F to 104°F(-20°C to 40°C)	>0,8	95°	2kV	Plastic	PC	>90
ASD-LRKR-6D12AC-BK-12PACK	Wet location	-4°F to 104°F(-20°C to 40°C)	>0,8	95°	2kV	Plastic	PC	>90
LRKR-M ROUND								
ASD-LRKR-M4D10WH	Wet location	-4°F to 113°F(-20°C to 45°C)	>0,9	102°	2kV	Metal	PC	>90
ASD-LRKR-M4D10BR	Wet location	-4°F to 113°F(-20°C to 45°C)	>0,9	102°	2kV	Metal	PC	>90
ASD-LRKR-M4D10BK	Wet location	-4°F to 113°F(-20°C to 45°C)	>0,9	102°	2kV	Metal	PC	>90
ASD-LRKR-M4D10WH-12P	Wet location	-4°F to 113°F(-20°C to 45°C)	>0,9	102°	2kV	Metal	PC	>90
ASD-LRKR-M4D10BR-12P	Wet location	-4°F to 113°F(-20°C to 45°C)	>0,9	102°	2kV	Metal	PC	>90
ASD-LRKR-M4D10BK-12P	Wet location	-4°F to 113°F(-20°C to 45°C)	>0,9	102°	2kV	Metal	PC	>90
ASD-LRKR-M6D12WH	Wet location	-4°F to 113°F(-20°C to 45°C)	>0,9	110°	2kV	Metal	PC	>90
ASD-LRKR-M6D12BR	Wet location	-4°F to 113°F(-20°C to 45°C)	>0,9	110°	2kV	Metal	PC	>90
ASD-LRKR-M6D12BK	Wet location	-4°F to 113°F(-20°C to 45°C)	>0,9	110°	2kV	Metal	PC	>90
ASD-LRKR-M6D12WH-12P	Wet location	-4°F to 113°F(-20°C to 45°C)	>0,9	110°	2kV	Metal	PC	>90
ASD-LRKR-M6D12BR-12P	Wet location	-4°F to 113°F(-20°C to 45°C)	>0,9	110°	2kV	Metal	PC	>90
ASD-LRKR-M6D12BK-12P	Wet location	-4°F to 113°F(-20°C to 45°C)	>0,9	110°	2kV	Metal	PC	>90
LRKS SQUARE								
ASD-LRKS-4D9AC-WH-6PACK	Wet location	-4°F to 104°F(-20°C to 40°C)	>0,8	90°	2kV	Plastic	PC	>90
ASD-LRKS-4D9AC-BZ-6PACK	Wet location	-4°F to 104°F(-20°C to 40°C)	>0,8	90°	2kV	Plastic	PC	>90
ASD-LRKS-4D9AC-BK-6PACK	Wet location	-4°F to 104°F(-20°C to 40°C)	>0,8	90°	2kV	Plastic	PC	>90
ASD-LRKS-6D12AC-WH-6PACK	Wet location	-4°F to 104°F(-20°C to 40°C)	>0,8	105°	2kV	Plastic	PC	>90
ASD-LRKS-6D12AC-BZ-6PACK	Wet location	-4°F to 104°F(-20°C to 40°C)	>0,8	105°	2kV	Plastic	PC	>90
ASD-LRKS-6D12AC-BK-6PACK	Wet location	-4°F to 104°F(-20°C to 40°C)	>0,8	105°	2kV	Plastic	PC	>90

DIMMING COMPATIBLE CONTROLS:

Brand	Lutron						Leviton				
	Models	DVW-603PGH-WH	CT-603PGH-WH	DVLV-603P-IV	MALV-600	NT-1000	S-600P	DB33K1	1F4205	6683	6672
		MIR-600THW-WH	DVCL-153P-WH	S-600PR-WH	DV-600P	S-603P	4X603	1E1205	VP106	6674	6631
		MACL-153M-WH									

PACKAGE CONTENTS:

Description	Quantity
LED Downlight Retrofit Kit	1 (6 for 6 pack; 12 for 12 pack)
Adapter (A)	1
Box	1



For most up-to-date spec sheets please refer to asd-lighting.com



LED DOWNLIGHT RETROFIT KIT

INSTALLATION GUIDE

IMPORTANT SAFETY INFORMATION:

Please read all the instructions below before installation!

- ▶ Make sure that the supply voltage corresponds to the rated product voltage.
- ▶ The product must be installed by a qualified electrician in accordance with the National Electrical Code and corresponding local codes.
- ▶ If the product is damaged, do not use it.

⚠ WARNING

RISK OF PERSONAL INJURY – READ and follow all WARNINGS and installation instructions. Keep or give to the owner for future reference.

Risk of cuts: Wear gloves to prevent cuts or abrasions when removing from carton, handling, installing, and maintaining this product.

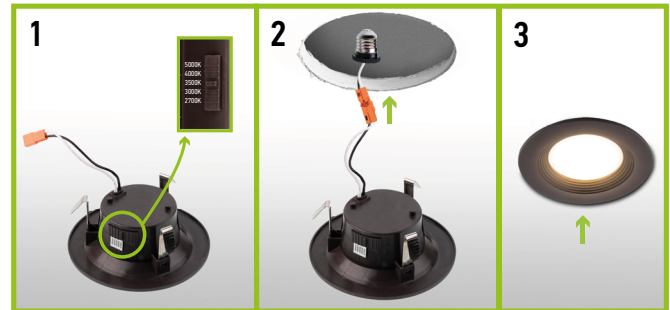
Risk of electric shock: This product must be installed in accordance with the applicable installation code by a person familiar with the construction and operation of the product and the hazards involved.

Risk of Fire: Minimum 194°F supply conductors. Consult a qualified electrician to ensure correct branch circuit conductor.

ASD® assumes no responsibility for claims arising out of improper or careless installation or handling of this product.

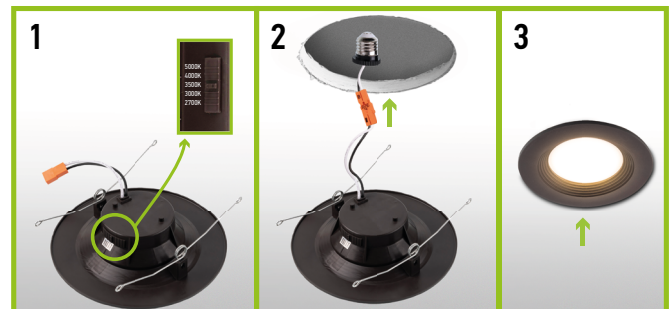
INSTALLATION STEPS 4”:

1. Choose needed color temperature by adjusting the switch.
2. Turn off the main power and remove the existing trim and bulb from the can. Use one of the options to connect the terminals.
3. Carefully route wires into the can and gently push the fixture up into the can until sealed.



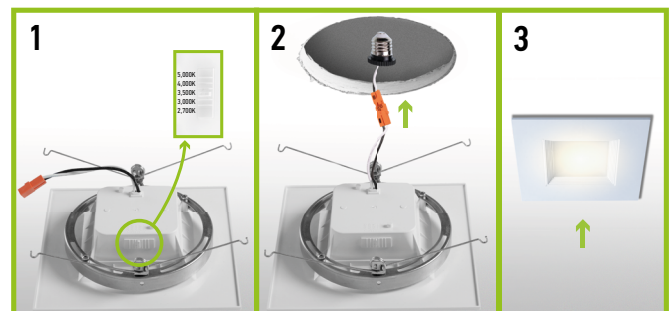
INSTALLATION STEPS 5” AND 6” ROUND:

1. Choose needed color temperature by adjusting the switch.
2. Turn off the main power and remove the existing trim and bulb from the Can. Use one of the options to connect the terminals.
3. Squeeze the two sets of spring clip arms up toward each other. Route wires into the Can and hook both springs into the arm hook on the inside of Can. Release springs and gently push the fixture up into the Can until sealed.



INSTALLATION STEPS FOR LRKS-6D12AC-WH:

1. Choose needed color temperature by adjusting the switch.
2. Turn off the main power and remove the existing trim and bulb from the Can. Use one of the options to connect the terminals.
3. Squeeze the two sets of spring clip arms up toward each other. Route wires into the Can and hook both springs into the arm hook on the inside of Can. Release springs and gently push the fixture up into the Can until sealed. Rotate the trim to the desired direction if needed.



For most up-to-date spec sheets please refer to asd-lighting.com



LED DOWNLIGHT RETROFIT KIT

ORDERING INFORMATION

Model	Product dimensions	Weight	Pcs. Per carton	Carton size	Carton weight	UPC	GTIN 14
LRKR ROUND							
ASD-LRKR-4D9AC-WH	5-1/16" x 5-1/16" x 2"	0.2 lbs(0.1kg)	6	11.02" x 7.87" x 5.79"	2.7 lbs	81005073929	10810050739297
ASD-LRKR-4D9AC-BR	5-1/16" x 5-1/16" x 2"	0.2 lbs(0.1kg)	6	11.02" x 7.87" x 5.79"	2.7 lbs	81012811596	10810128115961
ASD-LRKR-4D9AC-BK	5-1/16" x 5-1/16" x 2"	0.2 lbs(0.1kg)	6	11.02" x 7.87" x 5.79"	2.7 lbs	81005073956	10810050739563
ASD-LRKR-4D9AC-WH-12PACK	5-1/16" x 5-1/16" x 2"	2.9 lbs(1.3kg)	1	12.40" x 9.45" x 5.71"	3.8 lbs	81005073894	-
ASD-LRKR-4D9AC-BR-12PACK	5-1/16" x 5-1/16" x 2"	2.9 lbs(1.3kg)	1	12.40" x 9.45" x 5.71"	3.8 lbs	81012811761	-
ASD-LRKR-4D9AC-BK-12PACK	5-1/16" x 5-1/16" x 2"	2.9 lbs(1.3kg)	1	12.40" x 9.45" x 5.71"	3.8 lbs	81012811760	-
ASD-LRKR-6D12AC-WH	7-5/16" x 7-5/16" x 5/16"	0.4 lbs(0.2kg)	6	15.55" x 7.87" x 8.07"	3.8 lbs	81005073930	10810050739303
ASD-LRKR-6D12AC-BR	7-5/16" x 7-5/16" x 3-7/16"	0.4 lbs(0.2kg)	6	15.55" x 7.87" x 8.07"	3.8 lbs	81012811509	10810128115091
ASD-LRKR-6D12AC-BK	7-5/16" x 7-5/16" x 3-7/16"	0.4 lbs(0.2kg)	6	15.55" x 7.87" x 8.07"	3.8 lbs	81005073957	10810050739570
ASD-LRKR-6D12AC-WH-12PACK	7-5/16" x 7-5/16" x 3-7/16"	4.5 lbs(2.0kg)	1	13.39" x 12.40" x 7.28"	6.0 lbs	81005073895	-
ASD-LRKR-6D12AC-BR-12PACK	7-5/16" x 7-5/16" x 3-7/16"	4.5 lbs(2.0kg)	1	13.39" x 12.40" x 7.28"	6.0 lbs	81012811762	-
LRKR-M ROUND							
ASD-LRKR-M4D10WH	5-3/16" x 5-3/16" x 1-11/16"	0.2 lbs(0.1kg)	6	13.78" x 5.71" x 6.10"	2.7 lbs	81019020156	10810190201562
ASD-LRKR-M4D10BR	5-3/16" x 5-3/16" x 1-11/16"	0.2 lbs(0.1kg)	6	13.78" x 5.71" x 6.10"	2.7 lbs	81019020154	10810190201548
ASD-LRKR-M4D10BK	5-3/16" x 5-3/16" x 1-11/16"	0.2 lbs(0.1kg)	6	13.78" x 5.71" x 6.10"	2.7 lbs	81019020152	10810190201524
ASD-LRKR-M4D10WH-12P	5-3/16" x 5-3/16" x 1-11/16"	2.7 lbs(1.2kg)	1	14.76" x 10.83" x 5.91"	4.4 lbs	81019020157	-
ASD-LRKR-M4D10BR-12P	5-3/16" x 5-3/16" x 1-11/16"	2.7 lbs(1.2kg)	1	14.76" x 10.83" x 5.91"	4.4 lbs	81019020155	-
ASD-LRKR-M4D10BK-12P	5-3/16" x 5-3/16" x 1-11/16"	2.7 lbs(1.2kg)	1	14.76" x 10.83" x 5.91"	4.4 lbs	81019020153	-
ASD-LRKR-M6D12WH	7-3/16" x 7-3/16" x 1-5/8"	0.4 lbs(0.2kg)	6	14.37" x 8.27" x 8.07"	4.0 lbs	81019020162	10810190201623
ASD-LRKR-M6D12BR	7-3/16" x 7-3/16" x 1-5/8"	0.4 lbs(0.2kg)	6	14.37" x 8.27" x 8.07"	4.0 lbs	81019020160	10810190201609
ASD-LRKR-M6D12BK	7-3/16" x 7-3/16" x 1-5/8"	0.4 lbs(0.2kg)	6	14.37" x 8.27" x 8.07"	4.0 lbs	81019020158	10810190201586
ASD-LRKR-M6D12WH-12P	7-3/16" x 7-3/16" x 1-5/8"	5.3 lbs(2.4kg)	1	13.39" x 12.01" x 7.56"	7.2 lbs	81019020163	-
ASD-LRKR-M6D12BR-12P	7-3/16" x 7-3/16" x 1-5/8"	5.3 lbs(2.4kg)	1	13.39" x 12.01" x 7.56"	7.2 lbs	81019020161	-
ASD-LRKR-M6D12BK-12P	7-3/16" x 7-3/16" x 1-5/8"	5.3 lbs(2.4kg)	1	13.39" x 12.01" x 7.56"	7.2 lbs	81019020159	-
LRKS SQUARE							
ASD-LRKS-4D9AC-WH-6PACK	5" x 5" x 2-1/16"	1.5 lbs(0.7kg)	2	15.35" x 11.22" x 6.50"	4.9 lbs	81005073960	10810050739600
ASD-LRKS-4D9AC-BZ-6PACK	5" x 5" x 2-1/16"	1.5 lbs(0.7kg)	2	15.35" x 11.22" x 6.50"	4.9 lbs	81005073963	10810050739631
ASD-LRKS-4D9AC-BK-6PACK	5" x 5" x 2-1/16"	1.5 lbs(0.7kg)	2	15.35" x 11.22" x 6.50"	4.9 lbs	81005073962	10810050739624
ASD-LRKS-6D12AC-WH-6PACK	7-5/16" x 7-5/16" x 1-7/8"	2.4 lbs(1.1kg)	2	16.34" x 15.75" x 5.51"	7.5 lbs	810050739658	10810050739655
ASD-LRKS-6D12AC-BZ-6PACK	7-5/16" x 7-5/16" x 1-7/8"	2.4 lbs(1.1kg)	2	16.34" x 15.75" x 5.51"	7.5 lbs	81005073969	10810050739693
ASD-LRKS-6D12AC-BK-6PACK	7-5/16" x 7-5/16" x 1-7/8"	2.4 lbs(1.1kg)	2	16.34" x 15.75" x 5.51"	7.5 lbs	81005073967	10810050739679

For most up-to-date spec sheets please refer to asd-lighting.com

ASD LIGHTING CORP

E-mail: orders@asd-lighting.com | Web site: www.asd-lighting.com

