



LED UNDER CABINET BULLNOSE

► **DESIGN** - LED UNDER CABINET BULLNOSE with ON/OFF switch is a perfect solution for hidden backlight. The acrylic lens with a 110° beam angle and CRI90+ grants you even light distribution. It is designed to operate on 120V circuits.

► **COLOR SELECTABLE** - You can choose either a 2,700K soft white, 3,000K warm white, 3,500K neutral white, 4,000K cool white, or 5,000K daylight color temperature.

► **DIMMING** - Smooth triac dimming capabilities ranging from 10% to 100% with modern LED dimmers allow you to control the look and feel of your space.

► **INSTALLATION** - Quick and easy hardwired installation. It is also Damp Locations rated.

► **ADVANTAGES** - With a lifespan of 50,000 hours, these fixtures are made to last decades under normal operation! ASD provides a 5-year limited warranty along with UL certification to guarantee top quality products and safety!



Finish: White Bronze

PRODUCT PRESENTATION:

Model	Size	Power	Voltage	Dimming	Lumens	CCT	Finish	Dimensions	Certification
ASD-UBN-9WH	9 inch	4 W	120V	Triac	337lm	2,700/3,000/3,500/4,000/5,000K	White	9" x 3-1/2" x 1-1/8"	UL (E473804)
ASD-UBN-12WH	12 inch	5 W	120V	Triac	442lm	2,700/3,000/3,500/4,000/5,000K	White	12" x 3-1/2" x 1-1/8"	UL (E473804)
ASD-UBN-12WH-2P	12 inch	5 W	120V	Triac	442lm	2,700/3,000/3,500/4,000/5,000K	White	12" x 3-1/2" x 1-1/8"	UL (E473804)
ASD-UBN-12BR	12 inch	5 W	120V	Triac	442lm	2,700/3,000/3,500/4,000/5,000K	Bronze	12" x 3-1/2" x 1-1/8"	UL (E473804)
ASD-UBN-18WH	18 inch	10 W	120V	Triac	807lm	2,700/3,000/3,500/4,000/5,000K	White	18" x 3-1/2" x 1-1/8"	UL (E473804)
ASD-UBN-18WH-2P	18 inch	10 W	120V	Triac	807lm	2,700/3,000/3,500/4,000/5,000K	White	18" x 3-1/2" x 1-1/8"	UL (E473804)
ASD-UBN-18BR	18 inch	10 W	120V	Triac	807lm	2,700/3,000/3,500/4,000/5,000K	Bronze	18" x 3-1/2" x 1-1/8"	UL (E473804)
ASD-UBN-24WH	24 inch	12 W	120V	Triac	1,051lm	2,700/3,000/3,500/4,000/5,000K	White	24" x 3-1/2" x 1-1/8"	UL (E473804)
ASD-UBN-24WH-2P	24 inch	12 W	120V	Triac	1,051lm	2,700/3,000/3,500/4,000/5,000K	White	24" x 3-1/2" x 1-1/8"	UL (E473804)
ASD-UBN-24BR	24 inch	12 W	120V	Triac	1,051lm	2,700/3,000/3,500/4,000/5,000K	Bronze	24" x 3-1/2" x 1-1/8"	UL (E473804)
ASD-UBN-32WH	32 inch	16 W	120V	Triac	1,436lm	2,700/3,000/3,500/4,000/5,000K	White	32-1/4" x 3-1/2" x 1-1/8"	UL (E473804)
ASD-UBN-40WH	40 inch	20 W	120V	Triac	1,814lm	2,700/3,000/3,500/4,000/5,000K	White	40" x 3-1/2" x 1-1/8"	UL (E473804)
ASD-UBN-48WH	48 inch	24 W	120V	Triac	2,087lm	2,700/3,000/3,500/4,000/5,000K	White	48-1/16" x 3-1/2" x 1-1/8"	UL (E473804)

For detailed luminous flux information please refer to Annex 1.

ANNEX 1

Model	Watts	2,700K	3,000K	4,000K
ASD-UCS-9D3CC-WH	3W	226lm	240lm	247lm
ASD-UCS-12D5CC-WH ASD-UCS-12D5CC-BZ	5W	350lm	314lm	317lm
ASD-UCS-18D8CC-WH ASD-UCS-18D8CC-BZ	8W	551lm	584lm	613lm
ASD-UCS-24D12CC-WH ASD-UCS-24D12CC-BZ	12W	850lm	610lm	747lm
ASD-UCS-32D16CC-WH ASD-UCS-32D16CC-BZ	16W	1,210lm	1,266lm	1,328lm
ASD-UCL-40D20CC-WH	20W	1,509lm	1,430lm	1,431lm
ASD-UCS-48D24CC-WH	24W	1,650lm	1,667lm	1,744lm

For most up-to-date spec sheets please refer to asd-lighting.com





LED UNDER CABINET BULLNOSE

TECHNICAL PARAMETERS:

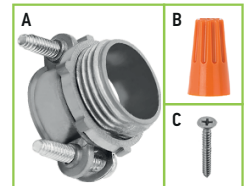
Model	Work environment	Operating temperature	Power factor	Housing	Lens	CRI
ASD-UBN-9WH	Damp location	-4°F to 113°F (-20°C to 45°C)	> 0.9	Steel	PC	> 90
ASD-UBN-12WH	Damp location	-4°F to 113°F (-20°C to 45°C)	> 0.9	Steel	PC	> 90
ASD-UBN-12WH-2P	Damp location	-4°F to 113°F (-20°C to 45°C)	> 0.9	Steel	PC	> 90
ASD-UBN-12BR	Damp location	-4°F to 113°F (-20°C to 45°C)	> 0.9	Steel	PC	> 90
ASD-UBN-18WH	Damp location	-4°F to 113°F (-20°C to 45°C)	> 0.9	Steel	PC	> 90
ASD-UBN-18WH-2P	Damp location	-4°F to 113°F (-20°C to 45°C)	> 0.9	Steel	PC	> 90
ASD-UBN-18BR	Damp location	-4°F to 113°F (-20°C to 45°C)	> 0.9	Steel	PC	> 90
ASD-UBN-24WH	Damp location	-4°F to 113°F (-20°C to 45°C)	> 0.9	Steel	PC	> 90
ASD-UBN-24WH-2P	Damp location	-4°F to 113°F (-20°C to 45°C)	> 0.9	Steel	PC	> 90
ASD-UBN-24BR	Damp location	-4°F to 113°F (-20°C to 45°C)	> 0.9	Steel	PC	> 90
ASD-UBN-32WH	Damp location	-4°F to 113°F (-20°C to 45°C)	> 0.9	Steel	PC	> 90
ASD-UBN-40WH	Damp location	-4°F to 113°F (-20°C to 45°C)	> 0.9	Steel	PC	> 90
ASD-UBN-48WH	Damp location	-4°F to 113°F (-20°C to 45°C)	> 0.9	Steel	PC	> 90

DIMMING COMPATIBLE CONTROLS:

Brand	Lutron		
Models	SELV-300P-WH-CSA	PD-5NE-WH-C	TGCL-153P
	AYCL-253P-WH	RRD-PRO-WH	

PACKAGE CONTENTS:

Description	Quantity
LED Under Cabinet Bullnose	1 (2 for 2P)
Romex connection (A)	1
Wire nut (B)	3
Screw (C)	2
Box	1



INSTALLATION GUIDE

IMPORTANT SAFETY INFORMATION:

Please read all the instructions below before installation!

- ▶ Make sure that the supply voltage corresponds to the rated product voltage.
- ▶ The product must be installed by a qualified electrician in accordance with the National Electrical Code and corresponding local codes.
- ▶ If the product is damaged, do not use it.

⚠ WARNING

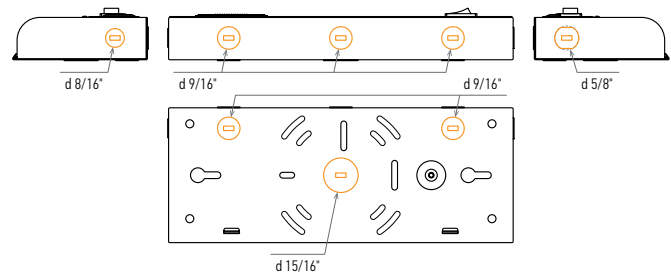
Risk of personal injury – read and follow all warnings and installation instructions. Keep or give to the owner for future reference.

Risk of cuts: Wear gloves to prevent cuts or abrasions when removing from carton, handling, installing, and maintaining this product.

Risk of electric shock: This product must be installed in accordance with the applicable installation code by a person familiar with the construction and operation of the product and the hazards involved.

Risk of Fire: Minimum 194°F supply conductors. Consult a qualified electrician to ensure correct branch circuit conductor.

ASD® assumes no responsibility for claims arising out of improper or careless installation or handling of this product.



For most up-to-date spec sheets please refer to asd-lighting.com

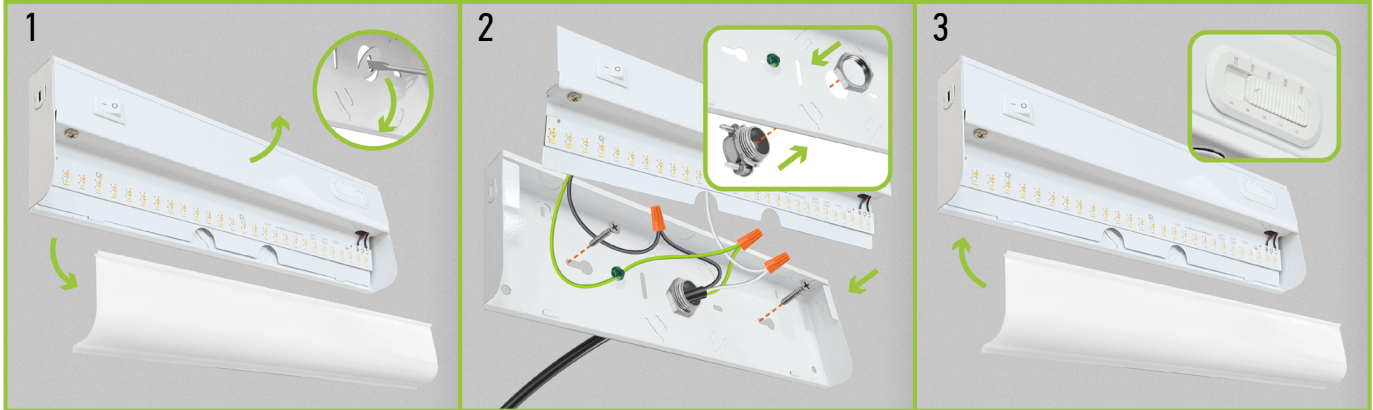




LED UNDER CABINET BULLNOSE

HARDWARE INSTALLATION:

1. Carefully remove the diffuser by gently squeezing it and holding the back side of the fixture. Open the wireway cover by pressing inward to release the cover from the two tabs. Dismount the back plate. Remove the knock-out.
2. Insert the romex connector into the open hole. Pass the wires through the romex connector. Connect the wires inside the fixture: Black to Black, White to White, Green to Green. Secure the connection with wire nuts. Attach the back plate to the surface using two screws. Reattach the front plate and fix it to the two tabs.
3. Reattach the diffuser. Choose the preferred color temperature using the switch.



ORDERING INFORMATION

Model	Product dimensions	Weight	Pcs. (pack) per carton	Carton size	Carton weight	UPC	GTIN 14
ASD-UBN-9WH	9" x 3-1/2" x 1-1/8"	0.8 lbs (0.4 kg)	20	16.1" x 10.2" x 8.5"	20.3 lbs	810128115438	10810128115435
ASD-UBN-12WH	12" x 3-1/2" x 1-1/8"	1 lbs (0.5 kg)	20	16.1" x 13.2" x 8.5"	24.7 lbs	810128115346	10810128115343
ASD-UBN-12WH-2P	12" x 3-1/2" x 1-1/8"	2 lbs (0.9 kg)	20 (2)	20.2" x 13.2" x 6.5"	22.5 lbs	810128115353	10810128115350
ASD-UBN-12BR	12" x 3-1/2" x 1-1/8"	1 lbs (0.5 kg)	20	16.1" x 13.2" x 8.5"	24.7 lbs	810128117791	10810128117798
ASD-UBN-18WH	18" x 3-1/2" x 1-1/8"	1.3 lbs (0.6 kg)	20	19.2" x 16.1" x 8.5"	32.2 lbs	810128115360	10810128115367
ASD-UBN-18WH-2P	18" x 3-1/2" x 1-1/8"	2.6 lbs (1.2 kg)	20 (2)	20.2" x 19.1" x 6.5"	28.9 lbs	810128115377	10810128115374
ASD-UBN-18BR	18" x 3-1/2" x 1-1/8"	1.3 lbs (0.6 kg)	20	19.2" x 16.1" x 8.5"	32.2 lbs	810128117807	10810128117804
ASD-UBN-24WH	24" x 3-1/2" x 1-1/8"	1.6 lbs (0.7 kg)	12	25.2" x 12.2" x 6.9"	22.8 lbs	810128115384	10810128115381
ASD-UBN-24WH-2P	24" x 3-1/2" x 1-1/8"	3.1 lbs (1.4 kg)	12 (2)	25.2" x 12.2" x 6.5"	34.6 lbs	810128115391	10810128115398
ASD-UBN-24BR	24" x 3-1/2" x 1-1/8"	1.6 lbs (0.7 kg)	12	25.2" x 12.2" x 6.9"	22.8 lbs	810128117814	10810128117811
ASD-UBN-32WH	32-1/4" x 3-1/2" x 1-1/8"	2.4 lbs (1.1 kg)	12	33.2" x 12.2" x 6.9"	33.1 lbs	810128115407	10810128115404
ASD-UBN-40WH	40" x 3-1/2" x 1-1/8"	3.1 lbs (1.4 kg)	6	41.2" x 8.2" x 5.2"	20.6 lbs	810128115414	10810128115411
ASD-UBN-48WH	48-1/16" x 3-1/2" x 1-1/8"	3.8 lbs (1.7 kg)	6	49.1" x 8.2" x 5.2"	25.4 lbs	810128115421	10810128115428

For most up-to-date spec sheets please refer to asd-lighting.com

ASD LIGHTING CORP

E-mail: orders@asd-lighting.com | Web site: www.asd-lighting.com

