



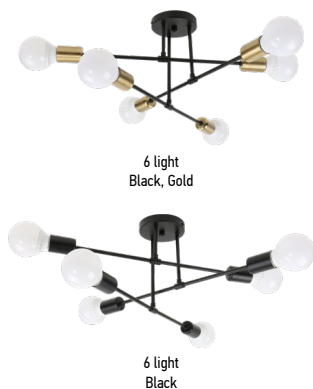
# CEILING FIXTURE ATTIC LITE

## ATTIC LITE series

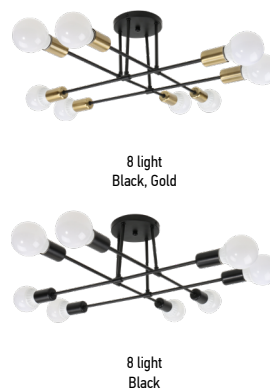
- ▶ **DESIGN** - The CEILING FIXTURE ATTIC LITE features a modern loft-style design with clean lines. Its high-quality metal housing adds a refined, contemporary touch, creating a warm and inviting atmosphere in any home interior. The durable lampholder ensures a stable connection with the bulb base, preventing oxidation, while the pre-wiring simplifies installation and provides lasting reliability.
- ▶ **VARIETY** - The series is available in 6-light and 8-light, offered in a black finish or black base with gold lampholders.
- ▶ **BULBS** - The fixture includes a standard E26 medium base, compatible with LED bulbs. Bulbs are not included.
- ▶ **APPLICATION** - The fixture is designed for residential use, ideal for living rooms, dining areas, bedrooms, and hallways. It provides bright, even illumination and integrates seamlessly into a variety of modern interiors.
- ▶ **ADVANTAGES** - ASD provides a 3-year limited warranty along with ETL certification to guarantee top quality products and safety!



ATTIC LITE-6E26



ATTIC LITE-8E26



## PRODUCT PRESENTATION:

Model	Number of lights	Voltage	Bulb type	Finish	Dimensions	Certification
ASD ATTIC LITE-6E26-BGD	6 light	120V	E26	Black, Gold	4-3/4" x 4-3/4" x 13/16"	ETL(5026458)
ASD ATTIC LITE-6E26-BK	6 light	120V	E26	Black	4-3/4" x 4-3/4" x 13/16"	ETL(5026458)
ASD ATTIC LITE-8E26-BGD	8 light	120V	E26	Black, Gold	5-7/8" x 5-7/8" x 13/16"	ETL(5026458)
ASD ATTIC LITE-8E26-BK	8 light	120V	E26	Black	5-7/8" x 5-7/8" x 13/16"	ETL(5026458)

## TECHNICAL PARAMETERS:

Model	Work environment	Operating temperature	Housing
ASD ATTIC LITE-6E26-BGD	Dry location	23°F to 104°F(-5°C to 40°C)	Iron
ASD ATTIC LITE-6E26-BK	Dry location	23°F to 104°F(-5°C to 40°C)	Iron
ASD ATTIC LITE-8E26-BGD	Dry location	23°F to 104°F(-5°C to 40°C)	Iron
ASD ATTIC LITE-8E26-BK	Dry location	23°F to 104°F(-5°C to 40°C)	Iron

For most up-to-date spec sheets please refer to [asd-lighting.com](http://asd-lighting.com)

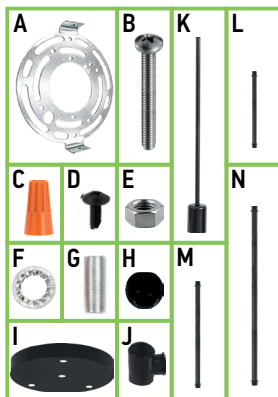


# CEILING FIXTURE ATTIC LITE

## ATTIC LITE series

### PACKAGE CONTENTS FOR 6 LIGHT MODELS:

Description	Quantity
Mounting plate (A)	1
Mounting screw (B)	2
Wire nut (C)	3
Fixture screw (D)	2
Hex nut (E)	4
Screw washer (F)	4
Threaded sleeve (G)	1
Decorative cap (H)	1
Ceiling base (I)	1
T-connector (J)	3
Arm (250mm) (K)	6
Tube (100mm) (L)	1
Tube (150mm) (M)	1
Tube (200mm) (N)	1
Box	1



### PACKAGE CONTENTS FOR 8 LIGHT MODELS:

Description	Quantity
Mounting plate (A)	1
Mounting screw (B)	2
Wire nut (C)	3
Fixture screw (D)	2
Hex nut (E)	5
Screw washer (F)	5
Threaded sleeve (G)	1
Decorative cap (H)	1
Ceiling base (I)	1
T-connector (J)	4
Arm (290mm) (K)	8
Tube (150mm) (L)	2
Tube (180mm) (M)	2
Box	1



## INSTALLATION GUIDE

### IMPORTANT SAFETY INFORMATION:

Please read all the instructions below before installation!

- ▶ Make sure that the supply voltage corresponds to the rated product voltage.
- ▶ The product must be installed by a qualified electrician in accordance with the National Electrical Code and corresponding local codes.
- ▶ If the product is damaged, do not use it.

### ⚠ WARNING

**Risk of personal injury** – read and follow all warnings and installation instructions. Keep or give to the owner for future reference.

**Risk of cuts:** Wear gloves to prevent cuts or abrasions when removing from carton, handling, installing, and maintaining this product.

**Risk of electric shock:** This product must be installed in accordance with the applicable installation code by a person familiar with the construction and operation of the product and the hazards involved.

**Risk of Fire:** Minimum 194°F supply conductors. Consult a qualified electrician to ensure correct branch circuit conductor.

ASD® assumes no responsibility for claims arising out of improper or careless installation or handling of this product.

### INSTALLATION STEPS:

1. Separate the arms (K) with the same wire length into pairs. Thread each pair's wires through connector (J) and then through the tubes:

**For 6 light:** short wires - tube (L), medium wires - tube (M), long wires - tube (N).

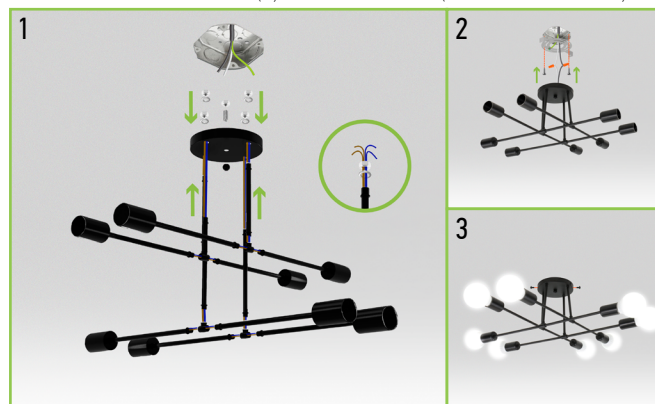
**For 8 light:** short wires - tubes (L), long wires - tubes (M).

Attach the tube to the connector (J) using a short thread.

Insert the wires through the outer holes of the ceiling base (I) (excluding the center hole). Slide the tubes in fully, thread the wires through the screw washers (F), and secure the tubes with hex nuts (E). Insert the decorative cap (H) and threaded sleeve in to the center hole, fastening them from the back with a hex nut (E).

2. Attach the mounting plate (A) to the outlet box using the mounting screws (B). Connect the wires: Black to Black, White to White, Ground to Ground. Secure the connection with wire nuts (C). Carefully tuck all wires back in to the outlet box.

3. Align the holes of the fixture and the mounting plate (A), ensure a solid fit, and secure with the fixture screws (D). Screw in the bulbs (bulbs are not included).



## ORDERING INFORMATION

Model	Product dimensions	Weight	Pcs. per carton	Carton size	Carton weight	UPC	GTIN 14
ASD ATTIC LITE-6E26-BGD	4-3/4" x 4-3/4" x 13/16"	1.7 lbs(0.7kg)	20	20.47" x 18.11" x 11.02"	40.6 lbs	81019020292	10810190202927
ASD ATTIC LITE-6E26-BK	4-3/4" x 4-3/4" x 13/16"	1.7 lbs(0.7kg)	20	20.47" x 18.11" x 11.02"	40.6 lbs	81019020291	10810190202910
ASD ATTIC LITE-8E26-BGD	5-7/8" x 5-7/8" x 13/16"	2.3 lbs(1.0kg)	20	26.77" x 18.11" x 12.60"	56.7 lbs	81019020294	10810190202941
ASD ATTIC LITE-8E26-BK	5-7/8" x 5-7/8" x 13/16"	2.3 lbs(1.0kg)	20	26.77" x 18.11" x 12.60"	56.7 lbs	81019020293	10810190202934

For most up-to-date spec sheets please refer to [asd-lighting.com](http://asd-lighting.com)