



ES-FS2835C-240-24-IP20

One LED Cut High Power Tape Light 24V 7W/ft 10mm CRI90+ IP20

Project: _____

Location: _____

Model # : _____ Qty: _____

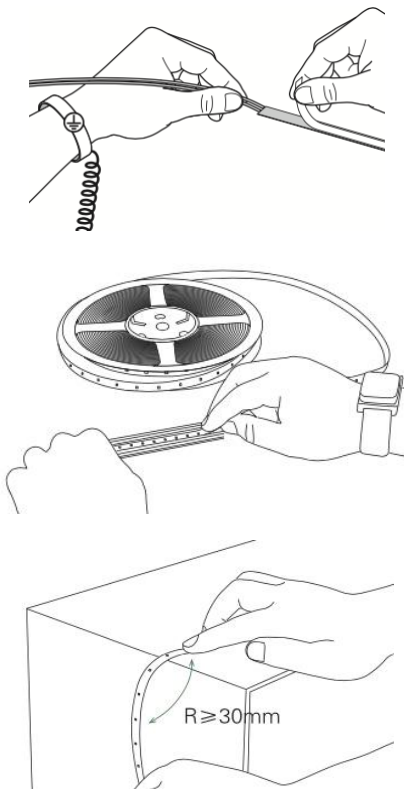
Notes: _____

DESCRIPTION

High Power 7 W/ft Ultra Bright LED tape light
 Precise fit in your application - cuttable every 5/16"
 CRI 90+ for true color rendering
 Reinforced design for stable performance when bending & twisting
 3 oz copper PCB and real gold wires for superb light maintenance
 Wires on both ends, options of 16ft and 100 ft reels
 Double sided adhesive 3M tape

INSTALLATION INSTRUCTIONS

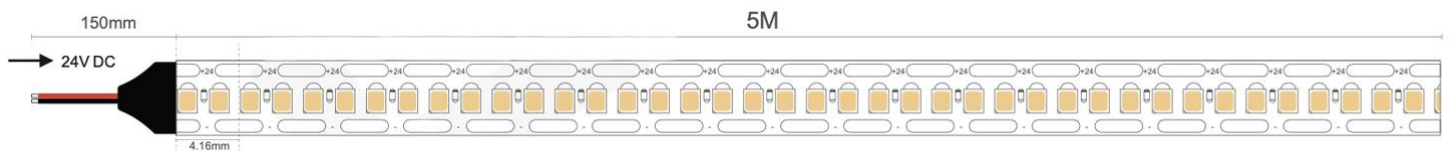
1. Remove backing plastic to reveal adhesive tape
2. Press LED tape firmly onto clean smooth surface that adsorbs heat, such as metal or glass. Start at one end and gradually move along surface, making sure tape is smooth and not creased
3. Cut on trim marks every 5/16"
4. Minimum Bending Diameter 2 3/8"



SPECIFICATION	
Applications	High Power installations with precise cut length
Power	7 W/ft (23 W/m)
Input	24V DC
Stock CCTs	2700 K 3000 K 4000 K 5000 K
Light output per meter	3036 lm 3105 lm 3289 lm 3289 lm
Efficiency	132 lm/W 135 lm/W 143 lm/W 143 lm/W
CRI	90 +
Available Lengths	16 ft or 100 ft roll
Maximum Connection Length	16 ft (5 m)
Width	3/8" (10 mm)
Beam Angle	115°
Dimmable	Yes
LED Operation Type	Constant Voltage
IP Grade	IP 20
Approved Location	Dry Location
Operating Temperature	-13°F (-25°C) to +113°F (+45°C)
Cuttable Increment	5/16" (4 mm)
Minimum Bending Diameter	2 3/8" (60 mm)
LEDs density	240 LEDs / meter
LEDs type	SMD 2835
Adhesive Tape Type	3M 300SE
Projected Life	70% Light Output at 50,000 Hours
Certification	c UL us
Warranty	5 Year Indoor / 3 Year Outdoor

WARNING

This high power LED tape gets very hot. Mounting firmly and securely on smooth and thermo conductive surface such as aluminum channel is critical for proper thermal management and long life. Not following these instructions voids the warranty



ORDERING GUIDE

example: **ES-FS2835C-240-24-IP20-30K-16FT**

	- CCT (K)	- Length
ES-FS2835C-240-24-IP20	-27K	-16FT
	-30K	-100FT
	-40K	
	-50K	

In stock 16 ft and 100 ft reels

ACCESSORIES

Sold Separately



[Tape to Wire Straight Screw Connector # SC-8-10-TW](#)

[Tape to Tape Straight Screw Connector # SC-8-10-TT-1](#)

[Tape to Tape 90° L-shape Screw Connector # SC-8-10-TT-9](#)

Lotus LED Lights USA

250 H Street # 301, Blaine WA 98230 tel 360-200-5500
 Hainesport NJ, Naples FL, Vancouver WA

www.LotusLEDLights.com

mailing addresses
 warehouses

Lotus LED Lights CANADA

1080 Cliveden Ave # 6, Delta BC V3M 6G6 tel 604-538-3090
 Delta BC & Mississauga ON